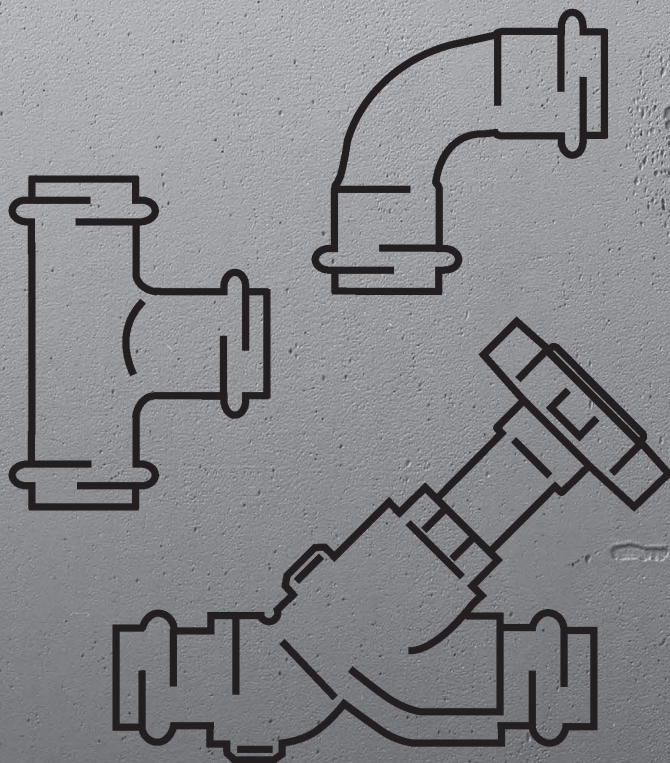


**Profipress sa SC-Contur**  
Cjevovodna tehnika



**viega**

Sustav press spojnica za bakrene cijevi, prilagođen strujanju, od bakra (99,9 % Cu-DHP), bronce ili silicijeve bronce. Press spojnice imaju cilindrično vođenje cijevi radi zaštite brtvenog elementa. Press spojnice od dimenzije d64,0 imaju narezni prsten od plemenitog čelika za osiguravanje mehaničke operativnosti spoja. Sila prešanja djeluje ispred i iza ležišta brtvenog elementa. Prikladno za nadžbuknu i podžbuknu montažu usponskih vodova i etažnih instalacija.

**Oznaka**

Proizvođač, dimenzija cijevi, šarža, oznake certifikata (DVGW), zelena točka na završetku za prešanje, narančasta naljepnica s opcijom skidanja koja služi kao pokazatelj izvedenog press spoja od dimenzije d64,0

**Press spojnice sa tehničkim rješenjem SC-Contur**

Slučajno nesprešani spojevi odmah se uočavaju pri provjeri nepropusnosti.

ViEGA omogućava prepoznavanje nesprešanih spojeva na sljedećim područjima tlakova:

- Min. tlak vode: 0,1 MPa / 1 bar / 14,5 PSI
- Maks. tlak vode: 0,65 MPa / 6,5 bar / 94,3 PSI
- Min. tlak zraka: 22 hPa / 22 mbar / 0,3 PSI
- Maks. tlak zraka: 0,3 MPa / 3 bar / 43,5 PSI

**Brtveni elementi**

EPDM (etilen-propilen-dien-kaučuk), crne boje, predmontiran

**Dimenzije**

d12–108,0, raspoloživost veličina u skladu s nacionalnom regulativom

**Alati**

Pouzdanost funkcioniranja ViEGA sustava press spojnica u prvom redu ovisi o tehničkoj ispravnosti upotrijebljenih press alata. Za izradu press spojeva tvrtka ViEGA preporučuje upotrebu ViEGA press alata. ViEGA press alate moraju redovito održavati ovlašteni servisni partneri.

**Područja primjene**

- Pitka voda
- Grijanje/priključivanje radijatora
- Kišnica
- Komprimirani zrak, inertni plinovi
- Vodovi rashladne vode
- Industrijske namjene
- Izgradnja postrojenja

**Uputa**

Korištenje sustava za područja primjene i za medije koji su drugačiji od opisanih područja primjene i medija mora biti dogovoreno uz savjetovanje s poduzećem ViEGA! Detaljne informacije o primjenama, ograničenjima i nacionalnim normama i smjernicama nalaze se u informacijama o proizvodima, u tiskanom obliku ili na internetskim stranicama poduzeća ViEGA.

**Uputa - norme i certifikati**

Press spojnice su ispitane prema DVGW radnom listu W 534 s DVGW ispitnim znakom. Certifikat za d12–108,0 prema DVGW reg. br. DW-8511BQ0586. Press spojnice su prikladne za bakrene cijevi prema normi DIN EN 1057 (R290, tvrda za Sprinkler instalaciju) i DVGW radnom listu GW 392. Prilikom uporabe u instalacijama grijanja obavezno je pridržavati se VDI-smjernice 2035 i norme DIN EN 12828.

**Uputa - granice primjene za pitku vodu**

Sustav press spojnica Profipress prikladan je za izradu instalacija pitke vode prema normama DIN 1988-200 i EN 806-2 uzimajući u obzir izbor materijala prema normama DIN EN 12502-1 i DIN 50930-6. Kod primjene za druga područja primjene i kod nedoumica u vezi s ispravnim odabirom materijala molimo Vas da se obratite poduzeću ViEGA. U pogledu mogućeg prekoračenja graničnih vrijednosti iona bakra prema Odredbi o vodi za piće, bakrene cijevi i spojni elementi smiju se upotrebljavati samo kada je pH vrijednost

pH ≥ 7,4 ili ako pri vrijednostima od pH = 7,0 – 7,4 ukupna količina organskog ugljika TOC ne prekoračuje 1,5 mg/l!

**Radni uvjeti za instalacije pitke vode**

Radna temperatura maks. 85 °C / 185 °F  
Radni tlak maks. 1,6 MPa / 16 bar / 232 PSI

**Radni uvjeti za instalacije grijanja**

Radna temperatura maks. 110 °C / 230 °F  
Radni tlak maks. 1,6 MPa / 16 bar / 232 PSI

**Materijali press spojnica**

Bakar: 99,9 % Cu-DHP  
Bronca: CC499K  
Silicijeva bronca: CC246E / CuSi4Zn9MnP

**Računar pada tlaka**

Internetska aplikacija za jednostavno i brzo određivanje dimenzija cjevovoda za vodove pitke vode, vodove grijanja i plinske vodove s pripadajućim tablicama pada tlaka za cijeli sustav.

**Pridržavamo pravo na izmjene i pogreške!**

Važeće Z-dimenzije i ugradbene dimenzije kao i daljnji tehnički podatci moraju se preuzeti sa internetske stranice poduzeća ViEGA i provjeriti prije kupnje, kod projektiranja, ugradnje ili korištenja. Naši proizvodi kontinuirano se optimiraju.

Ovaj opis proizvoda sadrži važne informacije o izboru proizvoda odn. sustava, o montaži i puštanju u rad, kao i o namjenskom korištenju i, ako je potrebno, o mjerama održavanja. Ove informacije o proizvodima, njihovim svojstvima i tehnikama primjene zasnivaju se na aktualno važećim normama u Europi (npr. EN) i/ili u Njemačkoj (npr. DIN/DVGW). Pojedini odlomci u tekstu mogu upućivati na tehničke propise u Europi/Njemačkoj. One bi za druge zemlje trebale važiti kao preporuke, ukoliko tamo ne postoje nikakvi odgovarajući nacionalni zahtjevi. Dotični nacionalni zakoni, standardi, propisi, norme, kao i drugi tehnički propisi imaju prednost pred njemačkim/europskim smjernicama ovog opisa proizvoda: ovdje prikazane informacije nisu obvezujuće za druge zemlje i područja te ih treba shvatiti kao podršku.

**SADRŽAJ**

Lukovi	4
T-komadi	7
Prijelazni komadi / koljena	12
Spojnice	17
Redukcije	19
Navojne spojnice	21
Kape, čepovi	23
Prirubnice	25
Zidne pločice	27
Montažne jedinice	29
Montažne jedinice	29
Zidne provodnice	31
Kompenzatori	31
Zaporni ventili od bronce	32
Zaporni ventili od bronce, od 2017.	32
Kuglaste slavine od bronce	33
Kuglaste slavine od bronce, od 2017.	33
Slobodnoprotočni ventili, od 2017.	35
Podžbukni slobodnoprotočni ventili, podžbukni ventili s ravnim sjedištem	35
Podžbukni slobodnoprotočni ventili, podžbukni ventili s ravnim sjedištem, od 2017.	35
Razdjelnici, križne spojnice	36
Priključci radijatora	37
Priključni komadi za priključivanje radijatora iz rubne letvice	40

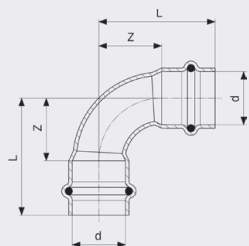


4 015211 305611

**GTIN-kod (Global Trade Item Number, prije EAN)**

GTIN broj sastoji se od fiksne šifre proizvođača 4015211 i dotičnog šesteroznamenastog broja artikla, u ovom primjeru 305 611. Zamjena zadnjih šest mjesta u oznaci brojem artikla daje GTIN-kod.

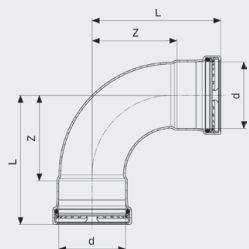
**LUKOVI**



**Profipress-Koljeno 90°**  
- bakar  
**Model 2416**

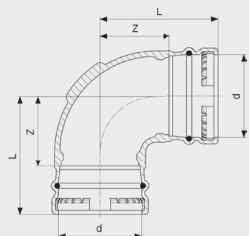
Artikl	d	L	Z	L*	Z*
291 488	12	32	14		
443 863	14	36	17		
291 501	15	38	16	40	18
443 870	16	38	19		
291 495	18	40	18	44	22
291 518	22	49	26	42	19
291 525	28	55	31	58	34
291 532	35	59	33	68	42
291 549	42	69	33	86	50
291 556	54	95	55	105	65

L\* = duljina prethodne verzije  
Z\* = Z-dimenzija prethodne verzije



**Profipress XL-Koljeno 90°**  
- bakar  
**Model 2416XL**

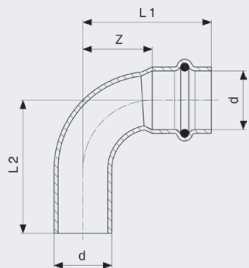
Artikl	d	Z	L
577 681	64,0	84	127
476 847	76,1	99	149
476 854	88,9	115	165
476 861	108,0	138	198



**Sanpress XL-Koljeno 90°**  
- bronca  
**Model 2216XL**

Artikl	d	Z	L	Z*	L*
350 697	76,1	44	97	68	114
350 680	88,9	67	120	49	102
350 703	108,0	77	140		

Z\* = Z-dimenzija prethodne verzije  
L\* = duljina prethodne verzije

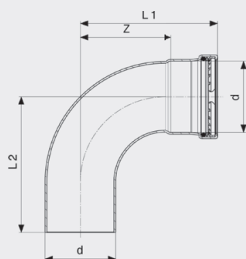


**Profipress-Koljeno 90°**  
- bakar  
**Model 2416.1**

Artikl	d	Z	L1	L2	Z*	L1*	L2*
291 648	12	14	32	34			
444 099	14	17	36	37			
291 662	15	16	38	41	18	40	41
444 105	16	19	38	39			
291 655	18	18	40	42	22	44	44
291 679	22	26	49	51	19	42	47
291 686	28	31	55	60	34	58	60
291 693	35	33	59	63	42	68	70
291 709	42	33	69	71	50	86	88
291 716	54	55	95	96	65	105	107

Z\* = Z-dimenzija prethodne verzije  
L\* = duljina prethodne verzije



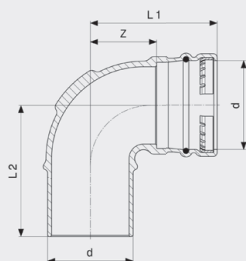


**Profipress XL-Koljeno 90°**

- bakar

**Model 2416.1XL**

Artikl	d	Z	L1	L2
577 698	64,0	84	127	126
476 878	76,1	99	149	147
476 885	88,9	115	165	162
476 892	108,0	138	198	195



**Sanpress XL-Koljeno 90°**

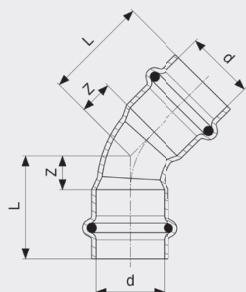
- bronca

**Model 2216.1XL**

Artikl	d	Z	L1	L2	Z*	L1*	L2*
353 650	76,1	44	97	112	61	114	118
353 667	88,9	67	120	125			
353 674	108,0	76	140	145			

Z\* = Z-dimenzija prethodne verzije

L\* = duljina prethodne verzije



**Profipress-Koljeno 45°**

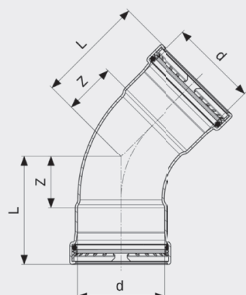
- bakar

**Model 2426**

Artikl	d	Z	L	Z*	L*
292 409	12	6	24		
444 051	14	7	26		
292 348	15	7	29	8	30
444 068	16	8	27		
292 416	18	7	29	9	31
292 355	22	11	34	9	32
292 362	28	12	36	14	38
292 379	35	15	41	17	43
292 386	42	17	53	21	57
292 393	54	22	62	27	67

Z\* = Z-dimenzija prethodne verzije

L\* = duljina prethodne verzije

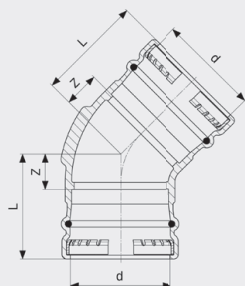


**Profipress XL-Koljeno 45°**

- bakar

**Model 2426XL**

Artikl	d	Z	L
577 766	64,0	39	82
476 908	76,1	46	96
476 915	88,9	52	102
476 922	108,0	61	121

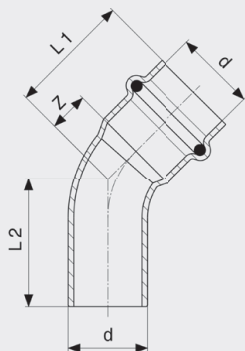


**Sanpress XL-Koljeno 45°**

- bronca

**Model 2226XL**

Artikl	d	Z	L
351 342	76,1	30	83
351 359	88,9	32	85
351 366	108,0	36	99



**Profipress-Koljeno 45°**

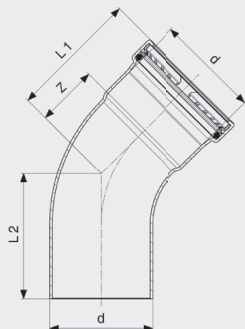
- bakar

**Model 2426.1**

Artikl	d	Z	L1	L2	Z*	L1*	L2*
292 577	12	6	24	26			
444 112	14	7	26	27			
292 508	15	7	29	29	8	30	31
444 129	16	8	27	28			
292 560	18	7	29	31	9	31	32
292 515	22	11	34	36	9	32	34
292 522	28	12	36	40	14	38	40
292 539	35	15	41	43	17	43	45
292 546	42	17	53	52	21	57	59
292 553	54	22	62	64	27	67	71

Z\* = Z-dimenzija prethodne verzije

L\* = duljina prethodne verzije

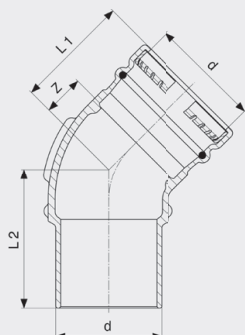


**Profipress XL-Koljeno 45°**

- bakar

**Model 2426.1XL**

Artikl	d	Z	L1	L2
577 773	64,0	39	82	82
476 939	76,1	46	96	93
476 946	88,9	52	102	99
476 953	108,0	61	121	119

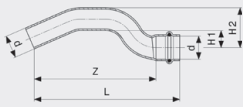


**Sanpress XL-Koljeno 45°**

- bronca

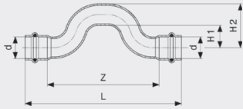
**Model 2226.1XL**

Artikl	d	Z	L1	L2
353 681	76,1	28	83	100
353 698	88,9	32	85	104
353 704	108,0	36	85	104



**Profipress-Nadvoj**  
- bakar  
**Model 2427**

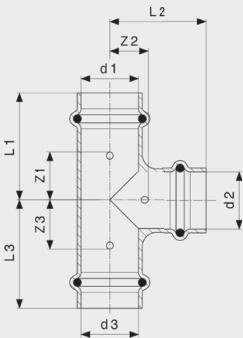
Artikl	d	Z	L	H1	H2
322 359	12	82	100	12	24
322 342	15	98	120	13	28
322 335	18	98	120	13	31
322 328	22	118	141	17	39



**Profipress-Nadvoj**  
- bakar  
**Model 2428**

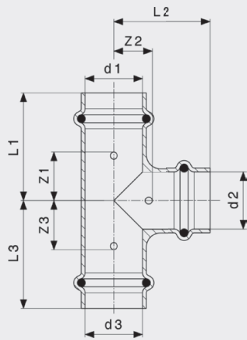
Artikl	d	Z	L	H1	H2
352 134	15	90	134	20	35
352 141	18	100	144	20	38
352 158	22	115	161	23	45

**T-KOMADI**



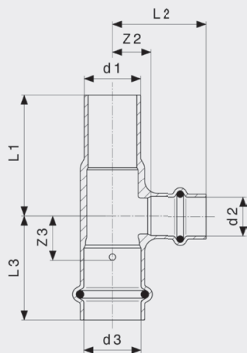
**Profipress-T-komad**  
- bakar  
**Model 2418**

Artikl	d1	d2	d3	Z1	Z2	Z3	L1	L2	L3
291 884	12	12	12	18	9	18	36	27	36
322 717	12	15	12	20	10	20	38	32	38
443 900	14	12	14	17	12	17	36	30	36
443 887	14	14	14	18	12	18	37	31	37
291 907	15	12	12	17	12	21	39	30	39
291 914	15	12	15	16	12	16	39	30	39
315 085	15	15	12	23	11	18	41	33	41
291 952	15	15	15	19	11	19	41	33	41
322 724	15	18	15	20	13	20	42	35	42
322 700	15	22	15	23	15	23	45	38	45
443 917	16	12	14	21	12	18	40	30	36
443 924	16	14	16	18	13	18	37	32	37
443 894	16	16	16	19	13	19	38	32	38
365 073	18	12	15	17	13	21	39	31	43
324 827	18	12	18	17	13	17	39	31	39
443 931	18	14	18	18	15	18	40	34	40
291 921	18	15	15	18	13	23	41	35	45
291 938	18	15	18	18	13	18	41	35	41
443 948	18	16	18	19	15	19	41	34	41
315 009	18	18	15	20	13	25	42	35	47
291 891	18	18	18	20	13	20	42	35	42
322 694	18	22	18	23	13	23	45	36	45
324 834	22	12	22	16	15	16	39	33	39
443 955	22	14	22	17	17	17	40	36	40
292 010	22	15	15	17	15	25	41	37	47
315 078	22	15	18	17	15	22	41	37	44
292 027	22	15	22	17	15	17	41	37	41
443 962	22	16	22	18	17	18	41	36	41
315 061	22	18	15	19	15	28	42	37	50
315 054	22	18	18	19	15	25	42	37	47
291 945	22	18	22	17	15	17	40	37	40
315 047	22	22	15	21	15	29	45	38	51



**Profipress-T-komad**  
- bakar  
**Model 2418**

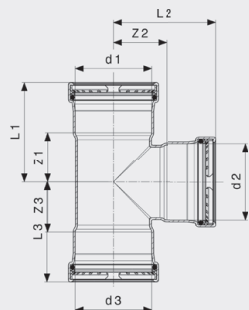
Artikl	d1	d2	d3	Z1	Z2	Z3	L1	L2	L3
315 030	22	22	18	21	15	29	45	38	51
291 969	22	22	22	19	15	19	42	38	42
322 687	22	28	22	25	15	25	48	39	48
324 841	28	15	22	17	19	23	41	41	46
295 189	28	15	28	17	19	17	41	41	41
324 858	28	18	22	18	19	24	42	41	47
315 023	28	18	28	16	19	16	40	41	40
307 899	28	22	22	21	19	27	45	42	50
295 196	28	22	28	20	19	20	45	42	45
315 016	28	28	22	30	19	23	48	43	53
291 976	28	28	28	24	19	24	48	43	48
324 865	35	15	35	17	22	17	44	44	44
324 872	35	18	35	18	22	18	44	44	44
324 889	35	22	28	19	22	29	46	45	53
292 034	35	22	35	19	22	13	46	45	46
324 896	35	28	28	32	22	22	49	46	56
292 041	35	28	35	22	22	22	49	46	49
365 882	35	35	22	26	22	40	52	48	63
365 080	35	35	28	26	22	35	52	48	59
291 983	35	35	35	26	22	26	52	48	52
324 902	42	22	42	17	29	17	53	52	53
292 058	42	28	42	19	29	19	55	53	55
292 065	42	35	42	22	29	22	58	55	58
291 990	42	42	42	29	27	29	65	63	65
324 919	54	22	54	19	35	19	60	58	60
324 926	54	28	54	22	35	22	63	59	63
324 933	54	35	54	26	35	26	67	61	67
292 072	54	42	54	29	35	29	69	71	69
292 003	54	54	54	35	35	35	75	75	75



**Profipress-T-komad**  
- bakar  
**Model 2418.1**

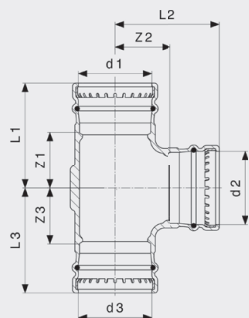
Artikl	d1	d2	d3	Z2	Z3	L1	L2	L3
477 356	22	15	22	15	17	48	37	48





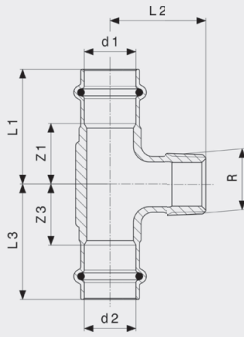
**Profipress XL-T-komad**  
- bakar  
**Model 2418XL**

Artikl	d1	d2	d3	Z1	Z2	Z3	L1	L2	L3
577 735	64,0	35	64,0	32	43	32	75	70	75
577 742	64,0	42	64,0	35	43	35	78	79	78
577 759	64,0	54	64,0	41	42	41	84	82	84
577 728	64,0	64,0	64,0	46	47	46	89	90	89
476 977	76,1	54	76,1	40	48	40	90	89	90
476 960	76,1	76,1	76,1	51	54	51	101	104	101
476 991	88,9	54	88,9	40	55	40	90	96	90
477 004	88,9	76,1	88,9	51	61	51	101	111	101
476 984	88,9	88,9	88,9	57	59	57	107	109	107
477 028	108,0	54	108,0	41	66	41	101	106	101
477 035	108,0	76,1	108,0	52	70	52	112	120	112
477 042	108,0	88,9	108,0	58	70	58	118	120	118
477 011	108,0	108,0	108,0	68	72	68	128	132	128



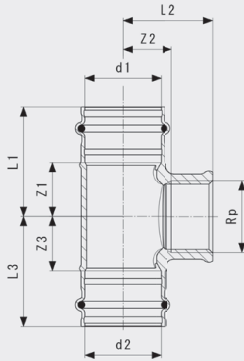
**Sanpress XL-T-komad**  
- bronca  
**Model 2218XL**

Artikl	d1	d2	d3	Z1	Z2	Z3	L1	L2	L3
354 398	76,1	54	76,1	47	65	47	100	105	100
350 628	76,1	76,1	76,1	61	61	61	114	114	114
354 404	88,9	54	88,9	46	70	46	100	110	100
354 411	88,9	76,1	88,9	62	67	62	115	120	115
350 635	88,9	88,9	88,9	67	67	67	120	120	120
354 428	108,0	54	108,0	47	80	47	110	120	110
354 435	108,0	76,1	108,0	62	77	62	125	130	125
354 442	108,0	88,9	108,0	67	77	67	130	130	130
350 642	108,0	108,0	108,0	77	77	77	140	140	140



**Sanpress-T-komad**  
- bronca ili silicijeva bronca  
**Model 2217.1**

Artikl	d1	R	d2	Z1	Z3	L1	L2	L3
<b>281 328</b>	18	3/4	18	23	23	45	40	45
<b>194 123</b>	22	3/4	22	27	27	50	42	50
<b>194 130</b>	28	3/4	28	27	27	50	45	50
<b>194 147</b>	35	3/4	35	25	25	50	45	50
<b>273 231</b>	42	3/4	42	19	19	55	50	55
<b>197 858</b>	54	3/4	54	26	26	66	55	66
<b>310 929</b>	54	1	54	29	29	69	63	69
<b>310 936</b>	54	1 1/4	54	32	32	72	66	72



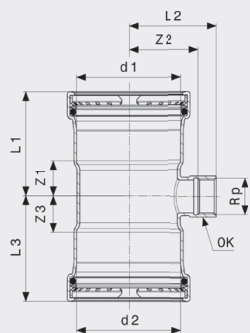
**Sanpress-T-komad**  
- bronca ili silicijeva bronca  
**Model 2217.2**

Artikl	d1	Rp	d2	Z1	Z2	Z3	L1	L2	L3	OK	Z1*	Z2*	Z3*	L1*	L2*	L3*
<b>290 986</b>	12	1/2	12	23	10	23	40	20	40	26						
<b>313 951</b>	15	3/8	15	21	21	21	43	21	43	21						
<b>115 630</b>	15	1/2	15	19	11	19	41	21	41	26	23	9	23	45	21	45
<b>281 359</b>	18	1/2	18	18	12	18	40	22	40	26	23	25	23	45	40	45
<b>115 944</b>	22	1/2	22	19	13	19	42	28	42	25	25	28	25	49	43	49
<b>313 975</b>	22	3/4	22	25	16	25	49	33	49	31						
<b>119 768</b>	28	1/2	28	21	17	21	45	32	45	25	25	31	25	49	46	49
<b>313 968</b>	28	3/4	28	29	19	29	52	35	53	31						
<b>121 945</b>	35	1/2	35	19	25	19	45	35	45	26	23	34	23	49	49	49
<b>361 204</b>	35	1	35	26	23	26	51	42	51	38	26	23	26			
<b>126 230</b>	42	1/2	42	19	35	19	55	50	55	28						
<b>361 211</b>	42	1	42	24	31	24	60	50	60	38	29	37	29	65	59	65
<b>197 353</b>	54	1/2	54	26	40	26	66	55	66	28						
<b>361 228</b>	54	1	54	29	47	29	69	66	69	39						

OK = otvor ključa

Z\* = Z-dimenzija prethodne verzije

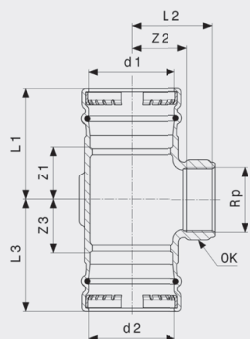
L\* = duljina prethodne verzije



**Profipress XL-T-komad**  
- bakar  
**Model 2417.2XL**

Artikl	d1	d2	Rp	Z1	Z2	Z3	L1	L2	L3	OK
577 704	64,0	64,0	¾	27	46	27	70	58	70	30
577 711	64,0	64,0	1	32	51	32	75	63	75	38
534 073	76,1	76,1	¾	27	48	27	77	64	77	30
534 080	76,1	76,1	2	40	48	40	90	74	90	65
534 097	88,9	88,9	¾	27	54	27	77	70	77	30
534 103	88,9	88,9	2	40	53	40	90	79	90	65
534 110	108,0	108,0	¾	28	64	28	88	80	88	30
534 127	108,0	108,0	2	41	64	41	101	90	101	65

OK = otvor kluća

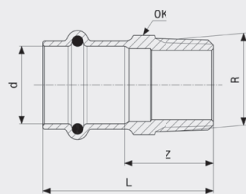


**Sanpress XL-T-komad**  
- bronca  
**Model 2217.2XL**

Artikl	d1	Rp	d2	Z1	Z2	Z3	L1	L2	L3	OK
354 572	76,1	¾	76,1	30	51	30	85	68	85	32
351 434	76,1	2	76,1	49	51	49	103	77	103	69
354 589	88,9	¾	88,9	32	58	32	85	74	85	32
351 441	88,9	2	88,9	49	57	49	103	83	103	69
354 596	108,0	¾	108,0	32	67	32	95	83	95	32
352 097	108,0	2	108,0	39	67	39	103	93	103	69

OK = otvor kluća

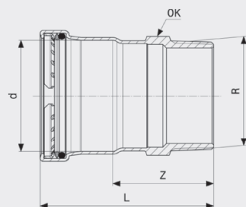
**PRIJELAZNI KOMADI / KOLJENA**



**Sanpress-Prijelazni komad**  
- bronca ili silicijeva bronca  
**Model 2211**

Artikl	d	R	Z	L	OK	Z*	L*	OK*
290 771	12	3/8	18	35	17	17	34	17
290 764	12	1/2	20	37	17	24	38	22
443 689	14	3/8	17	36	19			
443 696	14	1/2	25	44	19	22	41	22
297 985	15	3/8	20	42	19			
105 044	15	1/2	24	46	19	22	44	22
287 764	15	3/4	28	50	22	26	48	27
443 702	16	1/2	25	44	20			
443 719	16	3/4	25	44	27			
283 490	18	1/2	23	45	22	21	43	22
283 230	18	3/4	27	49	22	25	47	27
297 961	22	1/2	25	49	27	22	45	27
104 306	22	3/4	26	49	27	27	50	27
287 771	22	1	33	56	30	32	55	34
297 954	28	3/4	29	52	32			
106 508	28	1	32	55	34			
297 978	28	1 1/4	35	58	34	38	62	42
297 947	35	1	30	56	40			
110 352	35	1 1/4	34	60	43	36	59	43
314 651	35	1 1/2	37	62	50	35	60	50
297 930	42	1 1/4	29	65	48			
115 340	42	1 1/2	30	66	50	31	67	50
314 668	54	1 1/2	38	78	62			
195 267	54	2	39	79	62			

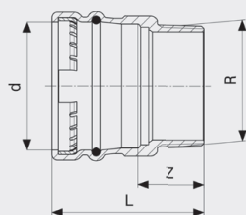
OK = otvor ključa  
Z\* = Z-dimenzija prethodne verzije  
L\* = duljina prethodne verzije  
OK\* = prethodna verzija (otvor ključa)



**Profipress XL-Prijelazni komad**  
- bakar  
**Model 2411XL**

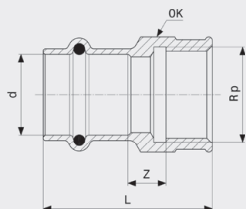
Artikl	d	R	Z	L	OK
577 674	64,0	2 1/2	70	113	77
534 134	76,1	2 1/2	70	120	77
534 141	88,9	3	74	124	90
534 158	108,0	4	86	146	115

OK = otvor ključa



**Sanpress XL-Prijelazni komad**  
- bronca  
**Model 2211XL**

Artikl	d	R	Z	L
350 659	76,1	2 1/2	42	95
350 666	88,9	3	47	100
350 673	108,0	4	47	110



**Sanpress-Prijelazni komad**

- bronca ili silicijeva bronca

**Model 2212**

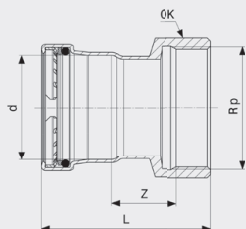
Artikl	d	Rp	Z	L	OK	Z*	L*	OK*
291 075	12	3/8	7	32	21			
291 068	12	1/2	7	39	26			
443 726	14	1/2	7	41	26			
298 074	15	3/8	8	37	21			
107 543	15	1/2	11	43	26	7	44	
298 098	15	3/4	13	45	31			
443 733	16	1/2	7	41	26			
283 483	18	1/2	10	42	26			
294 519	18	3/4	12	45	31			
298 067	22	1/2	9	42	26			
108 465	22	3/4	11	44	31			
298 128	22	1	14	49	38			
428 174	28	1/2	10	44	33			
298 081	28	3/4	12	46	33			
114 329	28	1	14	52	40			
298 104	28	1 1/4	18	55	47			
357 542	35	3/4	10	47	40			
298 111	35	1	9	46	40			
116 774	35	1 1/4	15	54	47			
298 050	42	1 1/4	12	61	47			
124 236	42	1 1/2	14	64	53			
365 097	54	1 1/2	13	72	62	11		66
195 304	54	2	15	75	66	14	75	70

OK = otvor ključa

Z\* = Z-dimenzija prethodne verzije

L\* = duljina prethodne verzije

OK\* = prethodna verzija (otvor ključa)



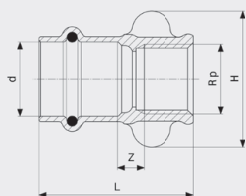
**Profipress XL-Prijelazni komad**

- bakar

**Model 2412XL**

Artikl	d	Rp	Z	L	OK
577 667	64,0	2 1/2	40	104	82

OK = otvor ključa

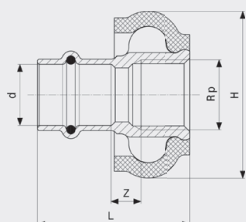


**Sanpress-Prijelazni komad**

- bronca ili silicijeva bronca

**Model 2212.3**

Artikl	d	Rp	Z	L	H
287 016	15	1/2	8	45	41
298 913	18	1/2	9	46	41
287 009	22	1/2	8	47	41



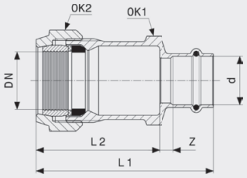
**Sanpress-Prijelazni komad**

- bronca ili silicijeva bronca

**Model 2212.4**

Artikl	d	Rp	Z	L	H
335 021*	18	1/2	9	46	50

\* = Isporka samo još iz zaliha na skladištu



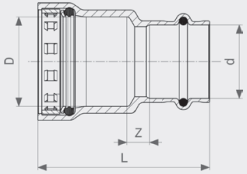
**Sanpress-Prijelazna navojna spojica**

- bronca ili silicijeva bronca

**Model 2215.6**

Artikl	DN	d	Z	L1	L2	SW1	SW2
588 564	25	28	9	104	73	50	55
588 328	32	35	9	112	73	68	70

SW = otvor ključa

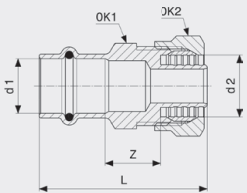


**Megapress-Prijelazni komad**

- silicijeva bronca

**Model 4213.2**

Artikl	DN	D	d	Z	L
736 255	15	1/2	15	5	55
754 679	15	1/2	18	4	54
736 279	20	3/4	22	5	58
736 293	25	1	28	9	67
736 309	32	1 1/4	35	6	78
736 316	40	1 1/2	42	7	90
736 323	50	2	54	8	98



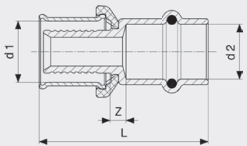
**Sanpress-Prijelazna navojna spojica**

- bronca

**Model 2213**

Artikl	d1	d2	L	Z	SW1	SW2
288 068	15	16	54	16	24	26

SW = otvor ključa

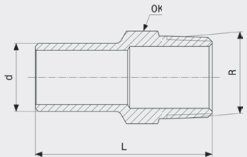


**Profipress-Prijelazni komad**

- bronca

**Model 1075.12P**

Artikl	d1	d2	Z	L
314 958	14	15	6	49



**Sanpress-Utični komad**

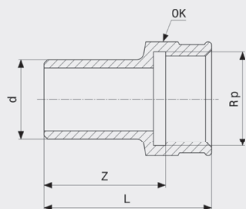
- bronca ili silicijeva bronca

**Model 2211.1**

Artikl	d	R	L	OK
291 310	12	1/2	47	22
115 418	15	1/2	49	22
285 081	18	1/2	50	22
285 104	18	3/4	56	27
119 676	22	1/2	53	22
116 767	22	3/4	58	27
122 034	28	1	62	34
125 288	35	1 1/4	66	43
132 231	42	1 1/2	78	50

OK = otvor ključa

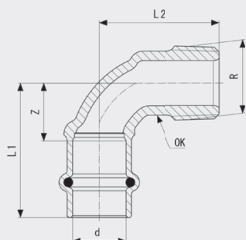




**Sanpress-Utični komad**  
- bronca ili silicijeva bronca  
**Model 2212.1**

Artikl	d	Rp	Z	L	OK
291 341	12	1/2	31	40	25
117 733	15	1/2	34	44	25
287 085	18	1/2	34	43	25
287 108	18	3/4	35	45	31
120 917	22	1/2	36	45	25
117 481	22	3/4	37	47	31
130 954	28	3/4	37	47	31
122 942	28	1	39	51	38
134 730	35	1	42	54	38
130 589	35	1 1/4	46	59	47
135 430	42	1 1/2	57	70	53
199 104	54	2	59	80	70

OK = otvor ključa



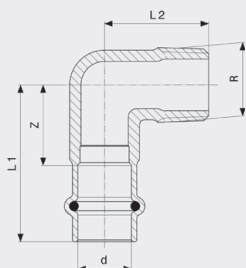
**Sanpress-Prijelazno koljeno 90°**  
- bronca ili silicijeva bronca  
**Model 2214**

Artikl	d	R	Z	L1	L2	OK	Z*	L1*	L2*
290 863	12	3/8	14	31	31	15	19	37	40
290 870	12	1/2	19	37	44	17	19	37	44
444 006	14	1/2	18	37	35	19	21	40	45
314 361	15	3/8	18	40	40	17	23	45	47
112 950	15	1/2	17	39	35	19	23	45	43
443 030	15	3/4	24	46	55	25	29	51	59
444 013	16	1/2	18	37	35	19	22	41	45
281 205	18	1/2	20	42	42	19	24	46	50
314 354	18	3/4	24	46	55	25			
115 623	22	3/4	21	44	41	25	28	51	59
118 730	28	1	35	58	58	31			72
127 329	35	1 1/4	33	58	58	39	48	74	88
128 500	42	1 1/2	29	65	60	45	56	92	98
197 988	54	2	43	83	80	55	70	110	120

OK = otvor ključa

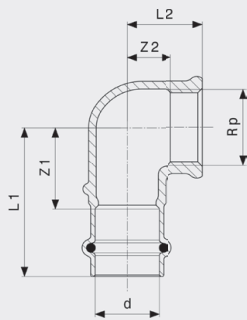
Z\* = Z-dimenzija prethodne verzije

L\* = duljina prethodne verzije



**Sanpress-Prijelazni luk 90°**  
- bronca ili silicijeva bronca  
**Model 2214.1**

Artikl	d	R	Z	L1	L2
335 281	15	1/2	18	40	30

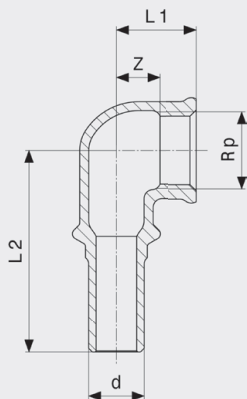


**Sanpress-Prijelazni luk 90°**  
- bronca ili silicijeva bronca  
**Model 2214.2**

Artikl	d	Rp	Z1	Z2	L1	L2	Z1*	Z2*	L1*	L2*
290 924	12	3/8	21	8	38	17				
290 931	12	1/2	23	10	40	20				
444 020	14	1/2	25	10	44	22				
298 241	15	3/8	24	8	46	19				
108 441	15	1/2	22	10	44	22	24	12	46	22
314 385	15	3/4	28	11	50	25				
444 037	16	1/2	25	10	44	22				
281 236	18	1/2	24	9	46	22				
298 227	18	3/4	28	11	50	24				
298 234	22	1/2	29	11	52	26				
283 711	22	3/4	29	11	52	27				
314 378	22	1	36	13	59	33				
442 033	28	1/2	33	14	56	32				
446 611	28	3/4	35	11	58	27				
283 728	28	1	36	13	59	33				
283 704	35	1 1/4	41	15	66	39				
299 415	42	1 1/2	41	15	77	43				
299 422	54	2	57	18	97	55				

Z\* = Z-dimenzija prethodne verzije

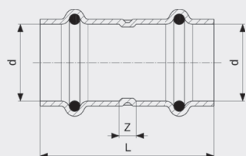
L\* = duljina prethodne verzije



**Sanpress-Utično koljeno 90°**  
- bronca ili silicijeva bronca  
**Model 2214.3**

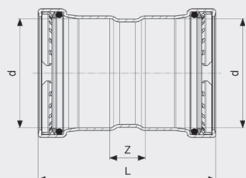
Artikl	d	Rp	Z	L1	L2
308 001	15	1/2	11	22	55

SPOJNICE



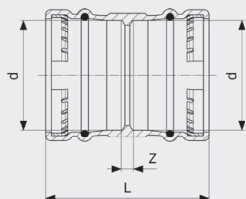
**Profipress-Spojnicica**  
- bakar  
Model 2415

Artikl	d	Z	L
292 737	12	3	39
443 740	14	3	41
292 690	15	3	47
443 856	16	3	41
292 744	18	5	49
292 683	22	5	51
292 676	28	4	52
292 706	35	4	56
292 713	42	4	76
292 720	54	4	84



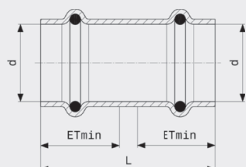
**Profipress XL-Spojnicica**  
- bakar  
Model 2415XL

Artikl	d	Z	L
577 582	64,0	24	110
477 059	76,1	25	125
477 066	88,9	25	125
477 073	108,0	27	147



**Sanpress XL-Spojnicica**  
- bronca  
Model 2215XL

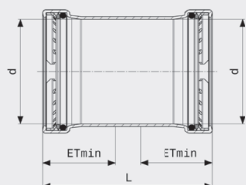
Artikl	d	Z	L
350 598	76,1	9	115
350 604	88,9	9	115
350 611	108,0	9	135



**Profipress-Klizna spojnicica**  
- bakar  
Model 2415.3

Artikl	d	L	ET <sub>min</sub>
713 416	12	39	18
461 256	15	47	22
461 263	18	49	22
461 270	22	51	23
461 287	28	52	24
461 294	35	56	26
461 317	42	76	36
461 300	54	84	40

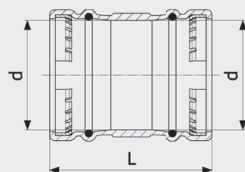
ET<sub>min</sub> = minimalna dubina umetanja



**Profipress XL-Klizna spojnicica**  
- bakar  
Model 2415.5XL

Artikl	d	L	ET <sub>min</sub>
577 650	64,0	110	43
477 080	76,1	125	50
477 097	88,9	125	50
477 103	108,0	147	60

ET<sub>min</sub> = minimalna dubina umetanja



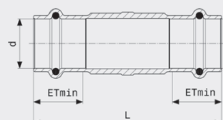
**Sanpress XL-Klizna spojnica**

- bronca

**Model 2215.5XL**

Artikl	d	L	ET <sub>min</sub>
353 315	76,1	115	43
353 322	88,9	115	43
353 339	108,0	135	43

ET<sub>min</sub> = minimalna dubina umetanja



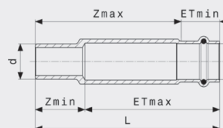
**Sanpress-Klizna spojnica**

- bronca ili silicijeva bronca

**Model 2215.5**

Artikl	d	L	ET <sub>min</sub>
119 485	15	80	22
287 061	18	80	22
119 041	22	85	24
122 133	28	95	24
124 335	35	105	26
131 494	42	120	36
216 153	54	135	48

ET<sub>min</sub> = minimalna dubina umetanja



**Sanpress-Klizna spojnica**

- bronca ili silicijeva bronca

**Model 2215.4**

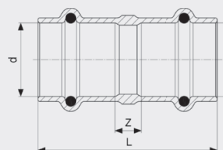
Artikl	d	L	ET <sub>max</sub>	ET <sub>min</sub>	Zmax	Zmin
588 533	22	115	84	23	93	32
588 540	28	125	93	26	99	32
588 557	35	135	100	25	99	36

ET<sub>max</sub> = maksimalna dubina umetanja

ET<sub>min</sub> = minimalna dubina umetanja

Zmax = maksimalna Z-dimenzija

Zmin = minimalna Z-dimenzija



**Sanpress-Spojnica**

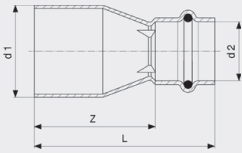
- bronca

**Model 9777.9**

Artikl	d	Z	L
335 946 <sup>1)</sup>	10	5	40

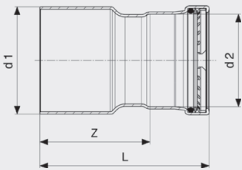
<sup>1)</sup> Press spoj d10 izvodi se pomoću press čeljusti 12 mm.

REDUKCIJE



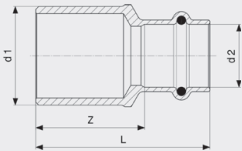
**Profipress-Redukcija**  
- bakar  
Model 2415.1

Artikl	d1	d2	Z	L
443 771	14	12	24	42
296 414	15	12	32	50
443 788	16	12	31	49
443 795	16	14	24	43
298 586	18	12	35	53
443 801	18	14	29	48
296 407	18	15	32	54
443 818	18	16	27	46
443 825	22	14	36	55
296 377	22	15	36	58
443 832	22	16	36	55
296 391	22	18	33	55
296 469	28	15	43	65
296 384	28	18	39	61
296 506	28	22	30	53
296 452	35	22	46	69
296 490	35	28	39	63
296 445	42	22	69	92
296 483	42	28	63	87
296 476	42	35	56	82
366 476	54	28	79	103
296 438	54	35	71	97
296 421	54	42	62	99



**Profipress XL-Redukcija**  
- bakar  
Model 2415.1XL

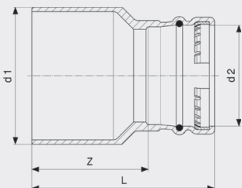
Artikl	d1	d2	Z	L
577 605	64,0	42	67	103
577 612	64,0	54	70	110
477 110	76,1	54	91	132
587 505	76,1	64,0	92	135
477 127	88,9	54	98	139
477 134	88,9	76,1	91	141
477 141	108,0	54	118	158
477 158	108,0	76,1	111	161
477 165	108,0	88,9	104	154



**Sanpress-Redukcija**  
- bronca ili silicijeva bronca  
Model 2215.1

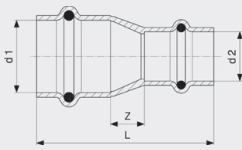
Artikl	d1	d2	Z	L	Z*	L*
366 865	22	12	30	47	26	43

Z\* = Z-dimenzija prethodne verzije  
L\* = duljina prethodne verzije



**Sanpress XL-Redukcija**  
- bronca  
Model 2215.1XL

Artikl	d1	d2	Z	L
354 664	76,1	54	81	121
354 671	88,9	54	86	126
354 688	88,9	76,1	72	125
354 695	108,0	54	106	146
354 701	108,0	76,1	92	145
354 718	108,0	88,9	87	140

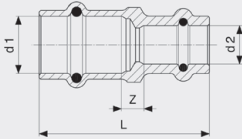


**Profipress-Reducir spojnica**

- bakar

**Model 2415.2**

Artikl	d1	d2	Z	L
325 770	15	12	8	48
325 787	18	15	7	53
325 794	22	15	11	56
325 800	22	18	9	54
325 817	28	22	11	58
328 269	35	28	13	63
328 252	42	35	13	75
328 276	54	42	19	95



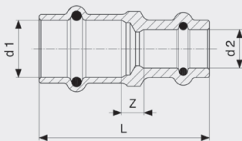
**Sanpress-Reducir spojnica**

- bronca

**Model 9778.0**

Artikl	d1	d2	Z	L
335 953 <sup>1)</sup>	12	10	5	40

<sup>1)</sup> Press spoj d10 izvodi se pomoću press čeljusti 12 mm.



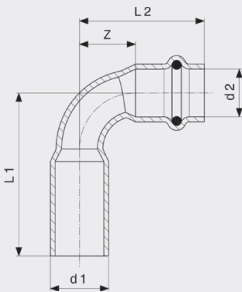
**Sanpress-Reducir spojnica**

- bronca

**Model 9778.1**

Artikl	d1	d2	Z	L
335 960 <sup>1)</sup>	15	10	6	46

<sup>1)</sup> Press spoj d10 izvodi se pomoću press čeljusti 12 mm.

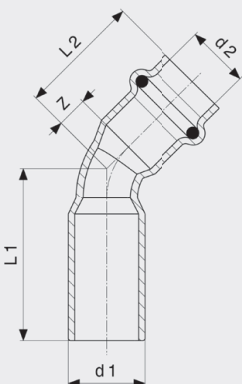


**Profipress-Reducirno koljeno 90°**

- bakar

**Model 2416.2**

Artikl	d1	d2	Z	L1	L2
629 281	15	12	14	32	42



**Profipress-Reducirno koljeno 45°**

- bakar

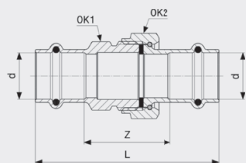
**Model 2426.2**

Artikl	d1	d2	Z	L1	L2
629 298*	15	12	6	34	24

\* = Isporuka samo još iz zaliha na skladištu



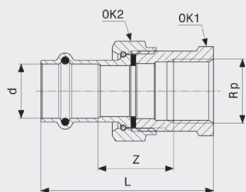
NAVOJNE SPOJNICE



**Sanpress-Navojna spojnica**  
- bronca ili silicijeva bronca  
**Model 2260**

Artikl	d	Z	L	SW1	SW2
293 017	12	30	65	24	30
126 148	15	33	77	24	30
287 436	18	36	80	24	30
126 124	22	42	89	31	37
124 311	28	48	95	40	46
130 947	35	49	100	45	53
132 446	42	49	121	50	60
226 329	54	49	129	70	78

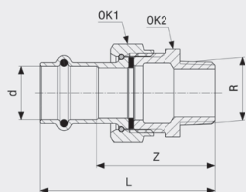
SW = otvor ključa



**Sanpress-Prijelazna navojna spojnica**  
- bronca ili silicijeva bronca  
**Model 2262**

Artikl	d	Rp	Z	L	SW1	SW2
293 024	12	1/2	23	56	27	30
131 937	15	1/2	26	63	27	30
133 160	15	3/4	33	66	31	30
283 384	18	1/2	28	65	27	30
314 910	18	3/4	36	68	31	30
125 318	22	3/4	32	72	34	37
133 900	22	1	42	78	40	37
365 103	28	3/4	23	63	32	46
128 975	28	1	33	76	44	46
138 875	35	1 1/4	36	83	50	53
141 745	42	1 1/2	38	96	56	60
222 017	54	2	27	84	72	78

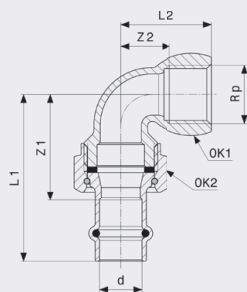
SW = otvor ključa



**Sanpress-Prijelazna navojna spojnica**  
- bronca ili silicijeva bronca  
**Model 2265**

Artikl	d	R	Z	L	SW1	SW2
291 372	12	3/8	40	58	30	27
291 389	12	1/2	44	61	30	27
120 108	15	1/2	46	68	30	27
140 878	15	3/4	48	69	30	27
283 360	18	1/2	49	71	30	27
283 377	18	3/4	50	72	30	27
142 674	22	1/2	50	74	37	34
119 133	22	3/4	54	77	37	34
148 492	22	1	54	78	37	34
365 110	28	3/4	58	82	46	44
120 047	28	1	59	83	46	44
128 425	35	1 1/4	63	89	53	50
135 966	42	1 1/2	69	105	60	55
221 997	54	2	67	107	78	70

SW = otvor ključa



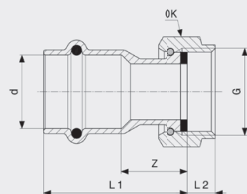
**Sanpress-Prijelazna navojna spojnica 90°**

- bronca ili silicijeva bronca

**Model 2255**

Artikl	d	Rp	Z1	Z2	L1	L2	SW1	SW2
292 980	12	½	36	18	53	33	28	30
125 660	15	½	38	18	60	33	28	30
283 469	18	½	41	18	63	33	28	30
283 452	18	¾	43	23	65	39	31	36
122 614	22	¾	47	23	71	39	31	37
132 637	22	1	50	25	74	44	38	37
128 159	28	1	57	28	81	47	38	46
132 729	35	1¼	60	35	85	57	47	53
139 872	42	1½	72	38	108	59	55	60
221 676	54	2	74	43	114	69	69	78

SW = otvor ključa



**Sanpress-Priključna navojna spojnica**

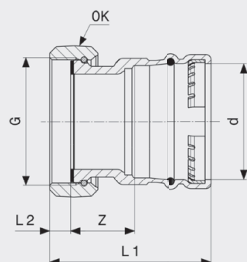
- bronca ili silicijeva bronca

**Model 2263**

Artikl	VdS	d	G	Z	L1	L2	OK
475 956		12	¾	17	35	7	22
380 878		12	½	13	31	7	24
293 611		12	¾	10	27	9	30
476 786		14	¾	18	44	7	22
443 849		14	½	15	40	7	24
444 150		14	¾	12	39	8	30
475 963		15	¾	19	41	7	22
380 885		15	½	15	37	7	24
265 663		15	¾	12	34	8	30
305 000		15	1	11	33	8	36
424 534		15	1¼	14	36	12	50
444 167		16	½	16	41	7	24
444 174		16	¾	12	39	8	30
283 391		18	¾	15	37	8	30
305 017		18	1	11	33	8	36
351 502		22	¾	21	44	8	30
265 687	✓	22	1	16	39	8	37
367 015	✓	22	1¼	13	37	11	50
305 260	✓	22	1½	13	37	8	52
692 629		28	1	19	42	9	37
265 700	✓	28	1¼	18	42	10	46
305 048	✓	28	1½	15	39	11	52
265 731	✓	35	1½	18	44	10	53
305 024	✓	35	2	14	39	12	65
265 304	✓	42	1¾	22	58	11	60
305 031	✓	42	2	20	56	14	66
426 743	✓	54	2¼	22	62	14	72
265 328	✓	54	2¾	13	53	12	78
341 961	✓	54	2½	17	57	16	88
426 750	✓	54	2¾	16	56	17	88

VdS = VdS odobrenje

OK = otvor ključa



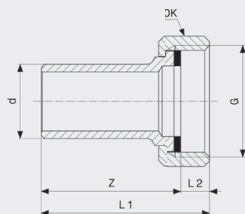
**Sanpress XL-Priključna navojna spojnica**

- bronca

**Model 2263XL**

Artikl	d	G	Z	L1	L2	OK
365 127	76,1	3	42	111	14	98
365 134	88,9	3½	42	111	14	112

OK = otvor ključa



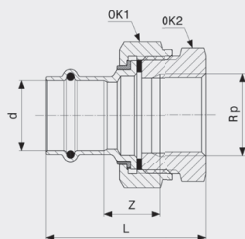
**Sanpress-Priključna navojna spojnica**

- bronca ili silicijeva bronca

**Model 2264**

Artikl	d	G	Z	L1	L2	OK
338 503	15	¾	41	49	8	29
338 510	18	¾	41	49	8	29
338 527	22	1	42	51	9	36
338 534	28	1¼	44	53	9	46
338 541	35	1½	46	56	11	52
338 558	42	1¾	63	74	11	59
338 565	54	2¾	57	68	11	75

OK = otvor ključa



**Sanpress-Izolacijska navojna spojnica**

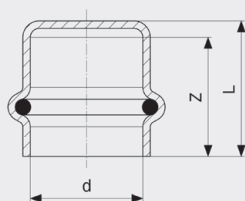
- bronca ili silicijeva bronca

**Model 2267**

Artikl	d	Rp	Z	L	SW1	SW2
469 450	15	½	18	55	37	34
469 467	15	¾	25	64	37	34
469 474	18	½	20	58	46	44
469 481	18	¾	19	58	46	44
469 498	22	¾	21	63	55	50
469 504	22	1	23	65	55	50
469 511	28	1	23	65	55	50
469 528	35	1¼	21	68	70	62
469 535	42	1½	19	77	73	68
469 542	54	2	24	90	88	83

SW = otvor ključa

**KAPE, ČEPOVI**

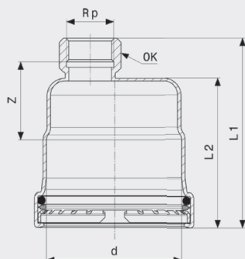


**Profipress-Kapa**

- bakar

**Model 2456**

Artikl	d	Z	L
349 295	12	20	23
444 075	14	21	24
349 301	15	22	25
444 082	16	21	24
349 363	18	24	27
349 356	22	25	28
349 349	28	26	29
349 332	35	29	32
349 325	42	38	42
349 318	54	42	46



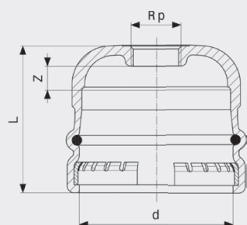
**Profipress XL-Kapa**

- bakar

**Model 2456XL**

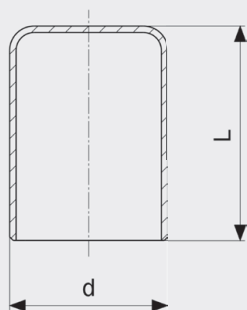
Artikl	d	Rp	Z	L1	L2	OK
577 780	64,0	¾	45	100	78	30
534 165	76,1	¾	45	107	85	30
534 172	88,9	¾	45	107	85	30
534 189	108,0	¾	46	118	96	30

OK = otvor ključa



**Sanpress XL-Kapa**  
- bronca  
**Model 2256XL**

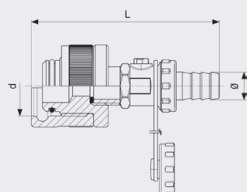
Artikl	d	Rp	Z	L
353 377	76,1	¾	12	76
353 384	88,9	¾	11	77
353 391	108,0	¾	15	89



**Profipress-Čep**  
- bakar  
**Model 2457**

Artikl	d	L
330 903	15	29
330 897	18	29
314 576	22	30
314 569	28	31
314 545*	42	46
314 538*	54	55

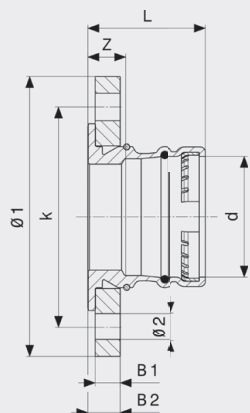
\* = Isporuka samo još iz zaliha na skladištu



**Čep za tlačnu probu**  
- mesing  
**Model 2269**

Artikl	d	L	Ø
290 801	12	117	14
141 523	15	120	14
289 423	18	120	14
140 557	22	119	14
142 568	28	131	14
144 111	35	119	14
144 999	42	123	14
187 798	54	127	14

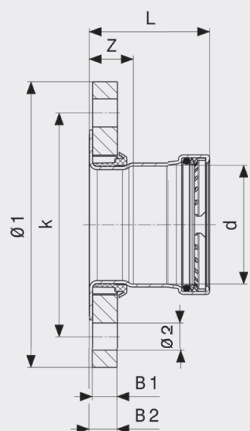
**PRIRUBNICE**



**Sanpress-Prirubnički prijelaz**  
- bronca ili silicijeva bronca  
**Model 2259.5**

Artikl	DN	d	Z	L	B1	B2	Ø1	Ø2	k	n
479 855	25	28	42	65	16	21	115	14	85	4
479 879	32	35	45	70	16	21	140	18	100	4
479 886	40	42	47	83	16	21	150	18	110	4
479 893	50	54	50	90	16	21	165	18	125	4

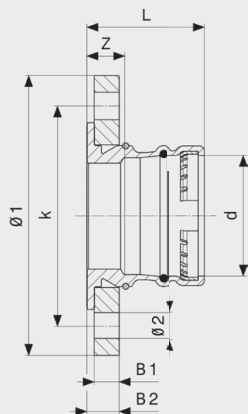
k = Ø diobene kružnice  
n = broj provrta



**Profipress XL-Prirubnički prijelaz**  
- bakar  
**Model 2459.5XL**

Artikl	DN	d	Z	L	B1	B2	Ø1	k	Ø2	n
577 797	65	64,0	28	71	16	18	185	145	18	8
534 042	65	76,1	28	78	16	18	185	145	18	8
534 059	80	88,9	30	80	18	20	200	160	18	8
534 066	100	108,0	32	92	18	21	220	180	18	8

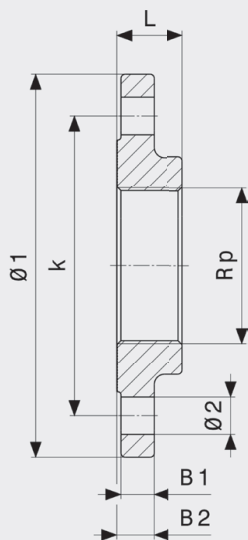
k = Ø diobene kružnice  
n = broj provrta



**Sanpress XL-Prirubnički prijelaz**  
- bronca  
**Model 2259.5XL**

Artikl	DN	d	Z	L	B1	B2	$\varnothing 1$	$\varnothing 2$	k	n
479 954	65	76,1	25	78	16	21	185	18	145	8
479 978	80	88,9	27	80	18	23	200	18	160	8
480 011	100	108,0	17	80	18	23	220	18	180	8

$k = \varnothing$  diobene kružnice  
 $n =$  broj provrta



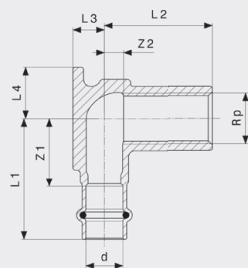
**Sanpress XL-Prirubnica, PN 16**  
- bronca  
**Model 2259.2XL**

Artikl	DN	$R_p$	$\varnothing 1$	L	B1	B2	$\varnothing 2$	k	n
641 603	80	3	200	34	18	20	18	160	8
641 610	100	4	220	38	18	20	18	180	8

$k = \varnothing$  diobene kružnice  
 $n =$  broj provrta

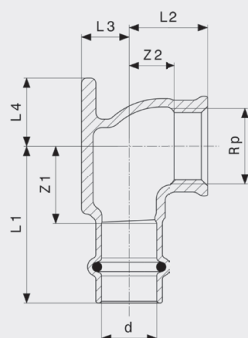


**ZIDNE PLOČICE**



**Sanpress-Zidna pločica**  
- bronca ili silicijeva bronca  
**Model 2225**

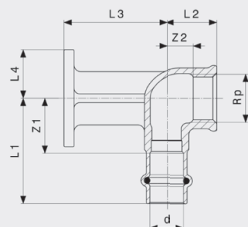
Artikl	d	Rp	L	Z1	Z2	L1	L2	L3	L4
<b>116 552</b>	15	½	45	28	8	50	45	13	21



**Sanpress-Zidna pločica**  
- bronca ili silicijeva bronca  
**Model 2225.5**

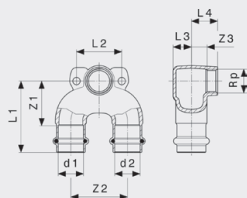
Artikl	d	Rp	Z1	Z2	L1	L2	L3	L4	Z1*	Z2*	L1*	L2*	L3*	L4*
<b>291 013</b>	12	½	23	10	40	20	11	21						
<b>444 044</b>	14	½	25	12	44	22	13	21						
<b>107 345</b>	15	½	22	13	44	22	13	19	24	12	46	21	13	22
<b>444 556</b>	16	½	25	12	44	22	13	21						
<b>281 502</b>	18	½	22	12	44	22	15	19	24	12	46	21	15	22
<b>335 236</b>	18	¾	28	13	50	24	16	21						
<b>335 229</b>	22	½	27	15	50	24	18	21						
<b>116 057</b>	22	¾	27	16	50	27	19	21						

Z\* = Z-dimenzija prethodne verzije  
L\* = duljina prethodne verzije



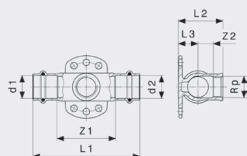
**Sanpress-Zidna pločica**  
- bronca ili silicijeva bronca  
**Model 2225.6**

Artikl	d	Rp	Z1	Z2	L1	L2	L3	L4
<b>347 307</b>	15	½	24	12	46	22	45	21



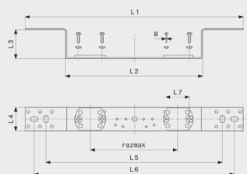
**Sanpress-Dvostruka zidna pločica**  
- bronca ili silicijeva bronca  
**Model 2228.7**

Artikl	d1	Rp	d2	Z1	Z2	Z3	L1	L2	L3	L4
<b>687 892</b>	15	½	15	34	50	8	56	40	13	23
<b>692 797</b>	18	½	18	34	50	8	56	40	14	23
<b>687 908</b>	22	½	22	40	50	8	63	40	16	23



**Sanpress-Zidna pločica s T-komadom**  
- bronca ili silicijeva bronca  
**Model 2217.3**

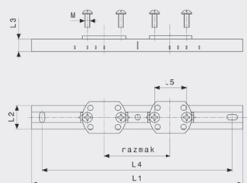
Artikl	d1	Rp	d2	Z1	Z2	L1	L2	L3
<b>644 864</b>	15	½	15	48	8	92	36	13
<b>625 726</b>	22	½	22	57	28	104	43	19



**Držac**  
- pocinčani čelik  
**Model 2021.7**

Artikl	razmak	L1	L2	L3	L4	L5	L6	L7	M
<b>651 350</b>	70/100/150	370	234	48	40	300	340	40	4

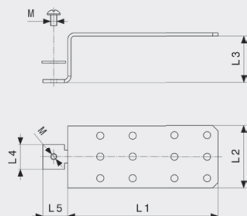
M = vrsta navoja



**Držac**  
- pocinčani čelik  
**Model 2141.3**

Artikl	razmak	L1	L2	L3	L4	L5	M
<b>581 701</b>	80-150	253	28	15	228	40	6

M = vrsta navoja

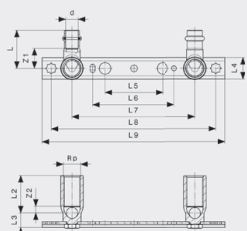


**Držac**  
- pocinčani čelik  
**Model 2141.4**

Artikl	L1	L2	L3	L4	L5	M
<b>586 706</b>	140	58	43	24	23	6

M = vrsta navoja

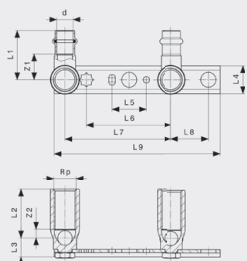
**MONTAŽNE JEDINICE**



**Sanpress-Montažna jedinica  
Model 2221**

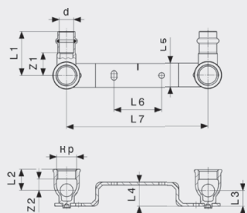
Artikl	d	Rp	L	razmak	Z1	Z2	L2	L3	L4	L5	L6	L7	L8	L9	L10	L11
124 502	15	½	45	150/200	24	8	45	18	26	70	100	150	200	222	200	222

**MONTAŽNE JEDINICE**



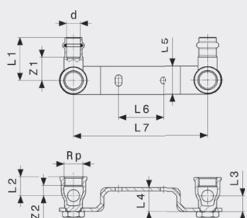
**Sanpress-Montažna jedinica  
Model 2221.1**

Artikl	d	Rp	L	razmak	Z1	Z2	L2	L3	L4	L5	L1	L6	L7	L8	L9
135 119	15	½	45	80/100	24	8	45	18	26	32	46	80	100	35	156



**Sanpress-Montažna jedinica  
Model 2222**

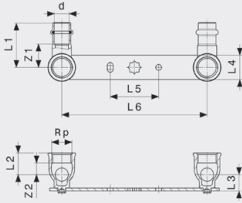
Artikl	d	Rp	razmak	Z1	Z2	L1	L2	L3	L4	L5	L6	L7
295 462	15	½	150	24	12	46	22	17	25	25	50	150



**Sanpress-Montažna jedinica  
Model 2222.6EX**

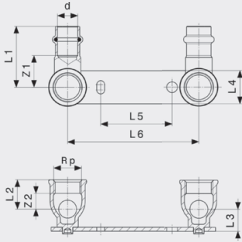
Artikl	d	Rp	razmak	Z1	Z2	L1	L2	L3	L4	L5	L6	L7
357 351	12	¾	120	21	9	38	17	14	21	25	40	120

**Sanpress-Montažna jedinica  
Model 2222.05**



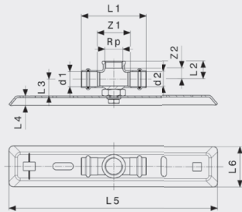
Artikl	d	Rp	razmak	Z1	Z2	L1	L2	L3	L4	L5	L6
<b>308 681</b>	15	½	150	18	12	40	22	17	25	50	150

**Sanpress-Montažna jedinica  
Model 2222.2**



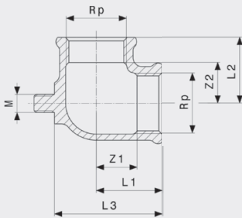
Artikl	d	Rp	razmak	Z1	Z2	L1	L2	L3	L4	L5	L6
<b>308 674</b>	15	½	100	18	12	40	22	17	25	55	100

**Sanpress-Montažna jedinica  
Model 2218.4**



Artikl	d1	Rp	d2	Z1	Z2	L1	L2	L3	L4	L5	L6
<b>625 078</b>	22	¾	22	49	16	96	27	37	14	310	60

**Priključno koljeno 90°  
Model 94477.0-713**



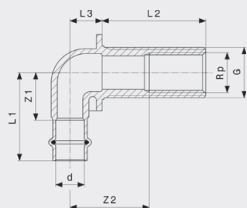
Artikl	Rp	Z1	Z2	L1	L2	L3	M
<b>374 570<sup>1</sup></b>	½	15	15	25	25	41	8
<b>489 298<sup>1</sup></b>	¾	18	18	29	29	47	8
<b>138 066<sup>2</sup></b>	1	15	15	35	35	57	8

M = vrsta navoja

<sup>1)</sup> bronca

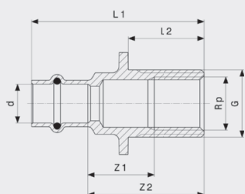
<sup>2)</sup> mesing

**ZIDNE PROVODNICE**



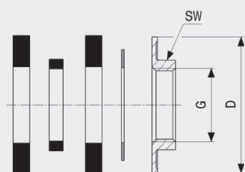
**Sanpress-Zidna provodnica**  
- bronca ili silicijeva bronca  
**Model 2232.1**

Artikl	d	Rp	G	L	Z1	Z2	L1	L2	L3
<b>279 301</b>	15	½	¾	25	25	27	47	25	18
<b>279 318</b>	15	½	¾	35	25	22	47	35	18
<b>279 288</b>	15	½	¾	55	25	42	47	55	18
<b>279 295</b>	15	½	¾	65	25	52	47	65	18



**Sanpress-Zidna provodnica**  
- bronca ili silicijeva bronca  
**Model 2232.3**

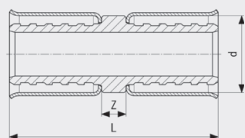
Artikl	d	Rp	G	L	Z1	Z2	L1	L2
<b>325 060</b>	15	½	¾	30	26	46	68	31



**Montažna garnitura**  
**Model 1526.414-897**

Artikl	G	OK	D
<b>104 887</b>	¾	29	49

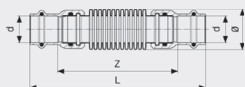
OK = otvor ključa  
D = vanjski promjer



**Smartloop-Spojnica**  
**Model 2276.8**

Artikl	Z	L
<b>643 188</b>	4	34

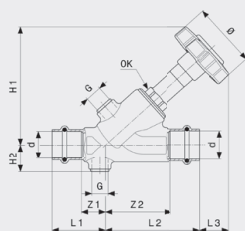
**KOMPENZATORI**



**Kompenzator**  
**Model 2251**

Artikl	d	Z	L	Ø
<b>690 250</b>	15	100	144	25
<b>690 267</b>	18	104	148	27
<b>690 274</b>	22	102	149	34
<b>690 281</b>	28	121	168	41
<b>690 298</b>	35	123	174	50
<b>690 304</b>	42	127	199	60
<b>690 311</b>	54	137	217	72

## ZAPORNI VENTILI OD BRONCE

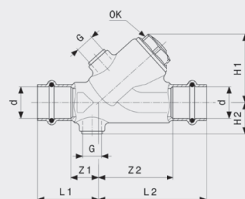


**Easytop-KRV kosi nasjedni ventil  
Model 2238**

Artikl	DN	d	Z1	Z2	L1	L2	L3	H1	H2	Ø	G	OK
457 198*	15	15	17	44	39	66	17	80	20	55	1/4	19
457 211*	20	22	20	54	43	77	19	96	22	55	1/4	19
457 235*	32	35	25	80	50	105	27	125	28	70	1/4	27
457 242*	40	42	29	84	65	120	35	148	32	90	1/4	36
457 259*	50	54	30	105	70	145	34	170	38	90	1/4	41

OK = otvor ključa

\* = Isporučka samo još iz zaliha na skladištu



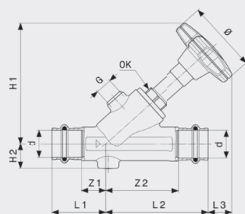
**Easytop-Ventil s nepovratnom zaklopkom  
Model 2239**

Artikl	DN	d	Z1	Z2	L1	L2	H1	H2	OK	G
471 026*	15	18	17	44	39	66	41	20	19	1/4
471 033*	20	22	20	54	43	77	49	22	25	1/4
471 040	25	28	23	66	46	89	58	26	30	1/4
471 163*	40	42	29	84	65	120	81	32	36	1/4
471 170*	50	54	30	105	70	145	92	38	41	1/4

OK = otvor ključa

\* = Isporučka samo još iz zaliha na skladištu

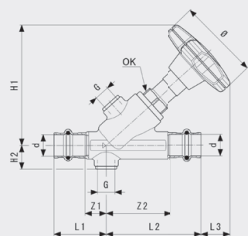
## ZAPORNI VENTILI OD BRONCE, OD 2017.



**Easytop-Kosi nasjedni ventil  
Model 2237.5**

Artikl	DN	d	Z1	Z2	L1	L2	L3	H1	H2	Ø	G	OK
756 864	15	15	17	44	39	66	22	85	19	60	1/4	19
756 871	15	18	17	44	39	66	22	85	19	60	1/4	19
756 888	20	22	20	54	43	77	25	98	21	60	1/4	19
756 895	25	28	23	66	46	89	31	115	25	73	1/4	27
756 901	32	35	25	80	50	105	32	131	27	73	1/4	27
756 918	40	42	29	84	65	120	41	154	31	98	1/4	39
756 925	50	54	30	105	70	145	43	178	37	98	1/4	32

OK = otvor ključa

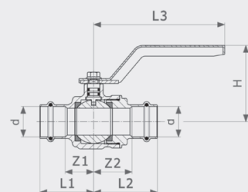


**Easytop-KRV kosi nasjedni ventil  
Model 2238.5**

Artikl	DN	Z1	Z2	L1	L2	L3	H1	H2	Ø	G	OK
757 199	15	17	44	39	66	23	86	20	60	1/4	19
757 205	15	17	44	39	66	23	86	20	60	1/4	19
757 212	20	20	54	43	77	25	97	22	60	1/4	19
757 229	25	23	66	46	89	32	116	26	73	1/4	27
757 236	32	25	80	50	105	33	131	28	73	1/4	27
757 243	40	29	84	65	120	36	149	32	98	1/4	32
757 250	50	30	105	70	145	35	171	38	98	1/4	32

OK = otvor ključa

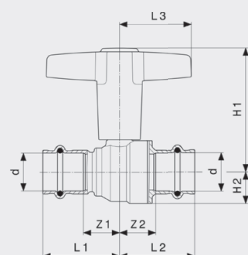
**KUGLASTE SLAVINE OD BRONCE**



**Easytop-Kuglasta slavina  
Model 2270.10**

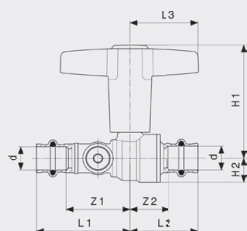
Artikl	DN	d	Z1	Z2	L1	L2	L3	H1	H2
590 437	15	15	20	26	42	48	110	61	19
590 451	20	22	22	29	45	52	110	62	22
590 482	40	42	33	33	69	69	135	93	39

**KUGLASTE SLAVINE OD BRONCE, OD 2017.**



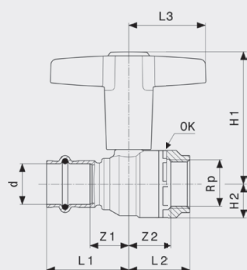
**Easytop-Kuglasta slavina  
Model 2275**

Artikl	DN	d	Z1	Z2	L1	L2	L3	H1	H2
746 377	15	15	20	20	42	42	43	69	15
746 384	15	18	20	20	42	42	43	69	15
746 391	20	22	21	20	45	43	43	72	18
746 407	25	28	26	26	49	50	51	91	22
746 414	32	35	34	27	59	52	51	97	28
746 421	40	42	37	32	73	68	60	119	34
746 438	50	54	44	38	84	78	60	127	41



**Easytop-Kuglasta slavina  
Model 2275.3**

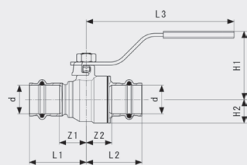
Artikl	DN	d	Z1	Z2	L1	L2	L3	H1	H2
746 681	15	15	35	20	57	42	43	69	15
746 698	15	18	34	20	56	42	43	69	15
746 704	20	22	38	20	62	43	43	72	18
746 711	25	28	43	26	66	50	51	91	22
746 728	32	35	43	27	68	52	51	97	28
746 735	40	42	62	32	98	68	60	119	34
746 742	50	54	70	38	110	78	60	127	42



**Easytop-Kuglasta slavina  
Model 2275.4**

Artikl	DN	d	Rp	Z1	Z2	L1	L2	L3	H1	H2	OK
746 759	15	15	1/2	20	18	42	33	43	69	15	28
746 766	15	18	1/2	20	18	42	33	43	15	15	28
746 773	20	22	3/4	21	18	45	34	43	72	18	35
746 780	25	28	1	26	22	49	41	51	91	22	43
746 797	32	35	1 1/4	30	26	55	48	51	97	28	49
746 803	40	42	1 1/2	37	31	73	57	60	119	34	57
746 810	50	54	2	44	36	84	62	60	127	42	70

OK = otvor ključa

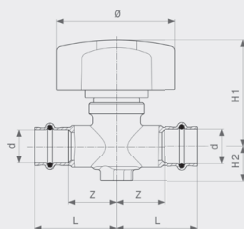


**Easytop-Kuglasta slavina  
- silicijeva bronca  
Model 2275.10**

Artikl	Z1	Z2	L1	L2	L3	H1	H2
774 851	20	20	42	42	116	51	15
774 868	20	20	42	42	116	51	15
774 875	21	20	45	43	116	53	18
774 882	26	26	49	50	147	63	22
774 899	30	27	55	52	147	68	28
774 905	37	32	37	68	156	77	34
774 912	44	38	84	78	156	84	42



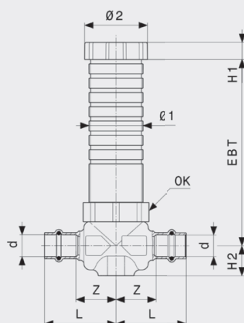
SLOBODNOPROTOČNI VENTILI, OD 2017.



Easytop-Slobodnoprotočni ventil  
Model 2278

Artikl	d	Z	L	H1	H2	Ø
747 312	15	32	54	70	23	79
747 329	18	31	53	70	23	79
747 336	22	31	55	70	23	79

PODŽBUKNI SLOBODNOPROTOČNI VENTILI, PODŽBUKNI VENTILI S RAVNIM SJEDIŠTEM



Easytop-Podžbukni ventil s ravnim sjedištem  
Model 2235

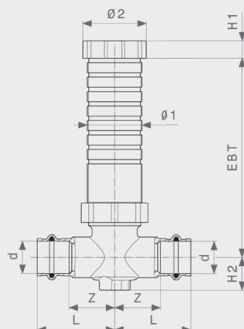
Artikl	DN	d	EBT	Z	L	H1	H2	OK	Ø1	Ø2
595 937*	15	15	45-130	28	50	12	21	44	38	44
596 767*	25	28	45-130	27	50	12	21	44	38	44

EBT = dubina ugradnje

OK = otvor ključa

\* = Isporuka samo još iz zaliha na skladištu

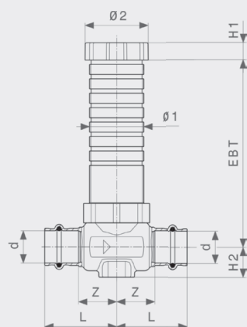
PODŽBUKNI SLOBODNOPROTOČNI VENTILI, PODŽBUKNI VENTILI S RAVNIM SJEDIŠTEM, OD 2017.



Easytop-Podžbukni slobodnoprotočni ventil  
Model 2278.5

Artikl	d	EBT	Z	L	H1	H2	Ø1	Ø2
747 343	15	45-130	32	54	12	23	38	44
747 350	18	45-130	31	53	12	23	38	44
747 367	22	45-130	31	55	12	23	38	44

EBT = dubina ugradnje

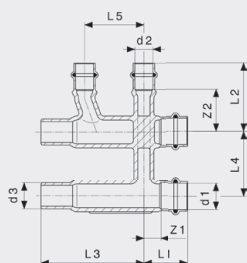


**Easytop-Podžbukni ventil s ravnim sjedištem**  
**Model 2235.2**

Artikl	DN	d	EBT	Z	L	H1	H2	Ø1	Ø2
<b>755 591</b>	15	15	45-130	28	50	12	21	38	44
<b>755 607</b>	15	18	45-130	28	50	12	21	38	44
<b>755 614</b>	20	22	45-130	27	50	12	21	38	44
<b>755 621</b>	25	28	45-130	27	50	12	21	38	44

EBT = dubina ugradnje

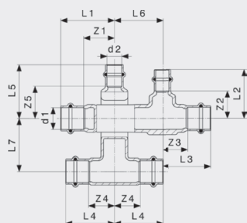
**RAZDJELNICI, KRIŽNE SPOJNICE**



**Sanpress-Razdjelnik za ugradnju u estrih**  
- bronca  
**Model 2252**

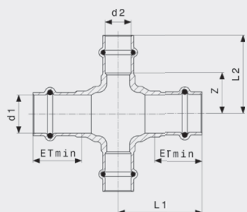
Artikl	d1	d2	d3	Z1	Z2	L1	L2	L3	L4	L5
<b>364 298<sup>1)</sup></b>	22	10	22	15	33	38	50	87	55	50
<b>397 166</b>	22	15	22	15	36	38	58	87	55	50

<sup>1)</sup> Press spoj d10 izvodi se pomoću press čeljusti 12 mm.



**Sanpress-Križni T-komad**  
- bronca  
**Model 2249.3**

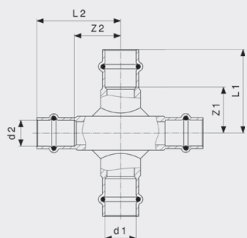
Artikl	d1	d2	Z1	Z2	Z3	Z4	Z5	L1	L2	L3	L4	L5	L6	L7
<b>493 325</b>	15	15	28	28	28	28	33	50	50	50	50	50	50	55
<b>493 332</b>	18	15	28	28	28	28	28	50	50	50	50	50	50	55
<b>493 356</b>	22	15	27	28	27	27	28	50	50	50	50	50	50	55
<b>493 349</b>	22	18	27	28	27	27	28	50	50	50	50	50	50	55



**Sanpress-Križna spojnica**  
- bronca ili silicijeva bronca  
**Model 2244**

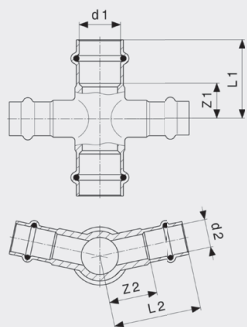
Artikl	d1	d2	ET <sub>min</sub>	Z	L1	L2
424 435	15	15	22	20	50	42
424 473	18	15	22	21	50	43
424 497	22	15	24	24	50	46

ET<sub>min</sub> = minimalna dubina umetanja



**Sanpress-Križni komad**  
- bronca  
**Model 2248**

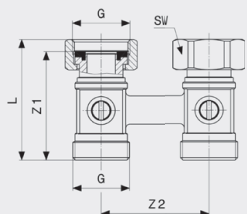
Artikl	d1	d2	Z1	Z2	L1	L2
322 410	15	15	26	26	48	48
322 427	18	15	27	27	49	49
323 370	22	15	27	30	50	52
323 363	28	15	28	33	54	55



**Sanpress-Križni komad 24°**  
- bronca  
**Model 2247**

Artikl	d1	d2	Z1	Z2	L1	L2
325 985	18	15	21	24	43	46
325 978	22	15	19	26	43	48

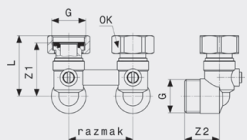
**PRIKLJUČCI RADIJATORA**



**Priključni komad za radiator**  
- matirano poniklani mesing  
**Model 1096.5**

Artikl	G	razmak	Z1	L	OK
359 102	3/4	50	48	54	30

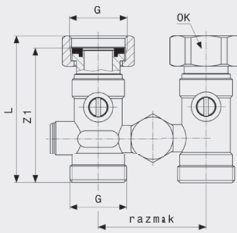
OK = otvor ključa



**Priključni komad za radiator**  
- matirano poniklani mesing  
**Model 1097.5**

Artikl	G	razmak	Z1	Z2	L	OK
359 133	3/4	50	42	27	47	30

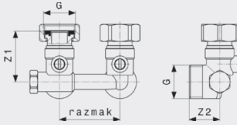
OK = otvor ključa



**Priključni komad za radiator**  
- matirano poniklani mesing  
**Model 1096.0**

Artikl	G	razmak	Z1	L	OK
<b>359 096</b>	3/4	50	62	68	30

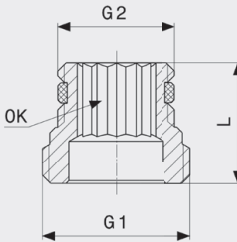
OK = otvor ključa



**Priključni komad za radiator**  
- matirano poniklani mesing  
**Model 1097.0**

Artikl	G	razmak	Z1	Z2	L	OK
<b>359 126</b>	3/4	50	43	25	47	30

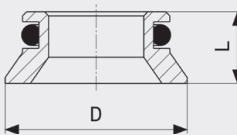
OK = otvor ključa



**Garnitura reducira**  
- mesing  
**Model 1096.8**

Artikl	G1	G2	L	OK
<b>357 122</b>	1/2	3/4	22	12

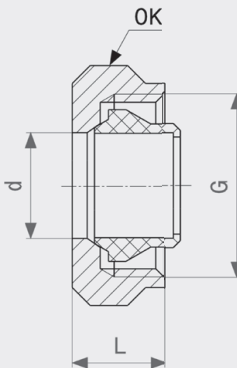
OK = otvor ključa



**Garnitura reducira**  
**Model 1096.9**

Artikl	D	L
<b>308 872</b>	22	9

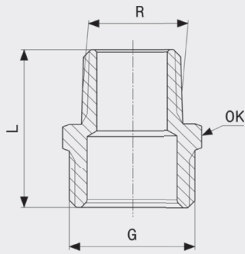
D = vanjski promjer



**Priključna navojna spojnica**  
- poniklani mesing  
**Model 94385.1**

Artikl	d	G	L	OK
<b>112 608</b>	12	3/4	14	30
<b>105 358</b>	15	3/4	14	30

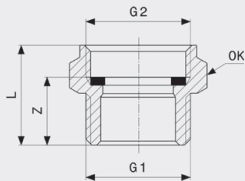
OK = otvor ključa



**Garnitura reducirana**  
- matirano poniklani mesing  
**Model 1022.6**

Artikl	R	G	L	OK
153 687	½	¾	33	27

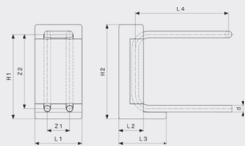
OK = otvor ključa



**Garnitura reducirana**  
- matirano poniklani mesing  
**Model 1022.5**

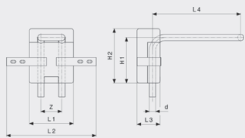
Artikl	G1	G2	Z	L	OK
137 342	¾	¾	17	25	30

OK = otvor ključa



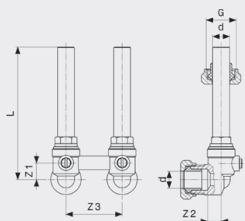
**Blok za priključivanje radijatora**  
**Model 1097.6**

Artikl	d	Z1	Z2	L1	L2	L3	L4	H1	H2
364 045	15	50	165	105	55	110	210	188	210
379 698	15	50	235	105	55	110	210	258	280



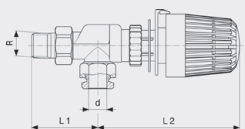
**Blok za priključivanje radijatora**  
**Model 1097.9**

Artikl	d	H	Z	L1	L2	L3	L4	H1	H2
586 379	15	150	50	105	214	55	210	109	130



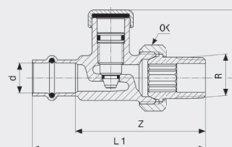
**Priključni set za radijatore**  
- matirano poniklani mesing  
**Model 1097.7**

Artikl	d	G	Z1	Z2	Z3	L
364 052	15	¾	15	11	50	118



**Aksijalni ventil radijatora**  
- poniklani mesing  
**Model 1075.96**

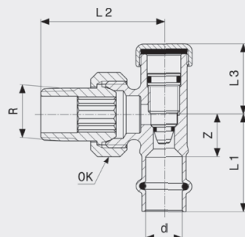
Artikl	d	R	L1	L2
360 405	15	½	56	120



**Sanpress-Povratna navojna spojnica**  
- bronca  
**Model 2272.2**

Artikl	d	R	Z	L1	L2	OK
<b>326 364</b>	15	½	67	89	35	29

OK = otvor ključa

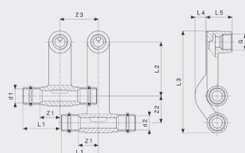


**Sanpress-Povratna navojna spojnica**  
- bronca  
**Model 2272.1**

Artikl	d	R	Z	L1	L2	L3	OK
<b>326 357</b>	15	½	17	39	50	28	29

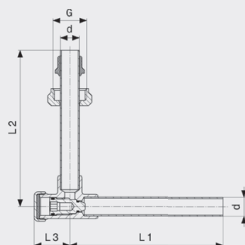
OK = otvor ključa

**PRIKLJUČNI KOMADI ZA PRIKLJUČIVANJE RADIJATORA IZ RUBNE LETVICE**



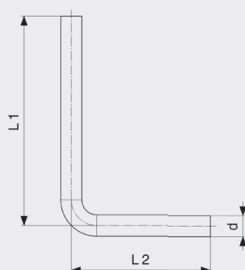
**Sanpress-Priklučni komad za radiator**  
- bronca  
**Model 2273.1**

Artikl	d1	G	d2	Z1	Z2	Z3	L1	L2	L3	L4	L5
<b>446 628</b>	15	½	15	26	35	50	48	70	131	14	34
<b>446 635</b>	18	½	18	26	35	50	48	70	131	14	31



**Priklučni set za radijatore**  
- poniklani mesing  
**Model 2272.5**

Artikl	d	G	L1	L2	L3
<b>360 399</b>	15	¾	121	123	28



**Priklučno koljeno 90°**  
- plemeniti čelik  
**Model 2271.1**

Artikl	d	L1	L2
<b>449 292</b>	15	150	100
<b>366 056</b>	15	350	100

proiz. broj	strana	proiz. broj	strana	proiz. broj	strana	proiz. broj	strana	proiz. broj	strana
104 306	12	141 523	24	291 310	14	296 391	19	322 410	37
104 887	31	141 745	21	291 341	15	296 407	19	322 427	37
105 044	12	142 568	24	291 372	21	296 414	19	322 687	8
105 358	38	142 674	21	291 389	21	296 421	19	322 694	7
106 508	12	144 111	24	291 488	4	296 438	19	322 700	7
107 345	27	144 999	24	291 495	4	296 445	19	322 717	7
107 543	13	148 492	21	291 501	4	296 452	19	322 724	7
108 441	16	153 687	39	291 518	4	296 469	19	323 363	37
108 465	13	187 798	24	291 525	4	296 476	19	323 370	37
110 352	12	194 123	10	291 532	4	296 483	19	324 827	7
112 608	38	194 130	10	291 549	4	296 490	19	324 834	7
112 950	15	194 147	10	291 556	4	296 506	19	324 841	8
114 329	13	195 267	12	291 648	4	297 930	12	324 858	8
115 340	12	195 304	13	291 655	4	297 947	12	324 865	8
115 418	14	197 353	10	291 662	4	297 954	12	324 872	8
115 623	15	197 858	10	291 679	4	297 961	12	324 889	8
115 630	10	197 988	15	291 686	4	297 978	12	324 896	8
115 944	10	199 104	15	291 693	4	297 985	12	324 902	8
116 057	27	216 153	18	291 709	4	298 050	13	324 919	8
116 552	27	221 676	22	291 716	4	298 067	13	324 926	8
116 767	14	221 997	21	291 884	7	298 074	13	324 933	8
116 774	13	222 017	21	291 891	7	298 081	13	325 060	31
117 481	15	226 329	21	291 907	7	298 098	13	325 770	20
117 733	15	265 304	22	291 914	7	298 104	13	325 787	20
118 730	15	265 328	22	291 921	7	298 111	13	325 794	20
119 041	18	265 663	22	291 938	7	298 128	13	325 800	20
119 133	21	265 687	22	291 945	7	298 227	16	325 817	20
119 485	18	265 700	22	291 952	7	298 234	16	325 978	37
119 676	14	265 731	22	291 969	8	298 241	16	325 985	37
119 768	10	273 231	10	291 976	8	298 586	19	326 357	40
120 047	21	279 288	31	291 983	8	298 913	13	326 364	40
120 108	21	279 295	31	291 990	8	299 415	16	328 252	20
120 917	15	279 301	31	292 003	8	299 422	16	328 269	20
121 945	10	279 318	31	292 010	7	305 000	22	328 276	20
122 034	14	281 205	15	292 027	7	305 017	22	330 897	24
122 133	18	281 236	16	292 034	8	305 024	22	330 903	24
122 614	22	281 328	10	292 041	8	305 031	22	335 021	13
122 942	15	281 359	10	292 058	8	305 048	22	335 229	27
124 236	13	281 502	27	292 065	8	305 260	22	335 236	27
124 311	21	283 230	12	292 072	8	307 899	8	335 281	15
124 335	18	283 360	21	292 348	5	308 001	16	335 946	18
124 502	29	283 377	21	292 355	5	308 674	30	335 953	20
125 288	14	283 384	21	292 362	5	308 681	30	335 960	20
125 318	21	283 391	22	292 379	5	308 872	38	338 503	23
125 660	22	283 452	22	292 386	5	310 929	10	338 510	23
126 124	21	283 469	22	292 393	5	310 936	10	338 527	23
126 148	21	283 483	13	292 409	5	313 951	10	338 534	23
126 230	10	283 490	12	292 416	5	313 968	10	338 541	23
127 329	15	283 704	16	292 508	6	313 975	10	338 558	23
128 159	22	283 711	16	292 515	6	314 354	15	338 565	23
128 425	21	283 728	16	292 522	6	314 361	15	341 961	22
128 500	15	285 081	14	292 539	6	314 378	16	347 307	27
128 975	21	285 104	14	292 546	6	314 385	16	349 295	23
130 589	15	287 009	13	292 553	6	314 538	24	349 301	23
130 947	21	287 016	13	292 560	6	314 545	24	349 318	23
130 954	15	287 061	18	292 577	6	314 569	24	349 325	23
131 494	18	287 085	15	292 676	17	314 576	24	349 332	23
131 937	21	287 108	15	292 683	17	314 651	12	349 349	23
132 231	14	287 436	21	292 690	17	314 668	12	349 356	23
132 446	21	287 764	12	292 706	17	314 910	21	349 363	23
132 637	22	287 771	12	292 713	17	314 958	14	350 598	17
132 729	22	288 068	14	292 720	17	315 009	7	350 604	17
133 160	21	289 423	24	292 737	17	315 016	8	350 611	17
133 900	21	290 764	12	292 744	17	315 023	8	350 628	9
134 730	15	290 771	12	292 980	22	315 030	8	350 635	9
135 119	29	290 801	24	293 017	21	315 047	7	350 642	9
135 430	15	290 863	15	293 024	21	315 054	7	350 659	12
135 966	21	290 870	15	293 611	22	315 061	7	350 666	12
137 342	39	290 924	16	294 519	13	315 078	7	350 673	12
138 066	30	290 931	16	295 189	8	315 085	7	350 680	4
138 875	21	290 986	10	295 196	8	322 328	7	350 697	4
139 872	22	291 013	27	295 462	29	322 335	7	350 703	4
140 557	24	291 068	13	296 377	19	322 342	7	351 342	6
140 878	21	291 075	13	296 384	19	322 359	7	351 359	6

proiz. broj	strana	proiz. broj	strana	proiz. broj	strana	proiz. broj	strana	proiz. broj	strana
351 366	6	442 033	16	471 040	32	577 698	5	747 329	35
351 434	11	443 030	15	471 163	32	577 704	11	747 336	35
351 441	11	443 689	12	471 170	32	577 711	11	747 343	35
351 502	22	443 696	12	475 956	22	577 728	9	747 350	35
352 097	11	443 702	12	475 963	22	577 735	9	747 367	35
352 134	7	443 719	12	476 786	22	577 742	9	754 679	14
352 141	7	443 726	13	476 847	4	577 759	9	755 591	36
352 158	7	443 733	13	476 854	4	577 766	5	755 607	36
353 315	18	443 740	17	476 861	4	577 773	6	755 614	36
353 322	18	443 771	19	476 878	5	577 780	23	755 621	36
353 339	18	443 788	19	476 885	5	577 797	25	756 864	32
353 377	24	443 795	19	476 892	5	581 701	28	756 871	32
353 384	24	443 801	19	476 908	5	586 379	39	756 888	32
353 391	24	443 818	19	476 915	5	586 706	28	756 895	32
353 650	5	443 825	19	476 922	5	587 505	19	756 901	32
353 667	5	443 832	19	476 939	6	588 328	14	756 918	32
353 674	5	443 849	22	476 946	6	588 533	18	756 925	32
353 681	6	443 856	17	476 953	6	588 540	18	757 199	33
353 698	6	443 863	4	476 960	9	588 557	18	757 205	33
353 704	6	443 870	4	476 977	9	588 564	14	757 212	33
354 398	9	443 887	7	476 984	9	590 437	33	757 229	33
354 404	9	443 894	7	476 991	9	590 451	33	757 236	33
354 411	9	443 900	7	477 004	9	590 482	33	757 243	33
354 428	9	443 917	7	477 011	9	595 937	35	757 250	33
354 435	9	443 924	7	477 028	9	596 767	35	774 851	34
354 442	9	443 931	7	477 035	9	625 078	30	774 868	34
354 572	11	443 948	7	477 042	9	625 726	28	774 875	34
354 589	11	443 955	7	477 059	17	629 281	20	774 882	34
354 596	11	443 962	7	477 066	17	629 298	20	774 899	34
354 664	19	444 006	15	477 073	17	641 603	26	774 905	34
354 671	19	444 013	15	477 080	17	641 610	26	774 912	34
354 688	19	444 020	16	477 097	17	643 188	31		
354 695	19	444 037	16	477 103	17	644 864	28		
354 701	19	444 044	27	477 110	19	651 350	28		
354 718	19	444 051	5	477 127	19	687 892	28		
357 122	38	444 068	5	477 134	19	687 908	28		
357 351	29	444 075	23	477 141	19	690 250	31		
357 542	13	444 082	23	477 158	19	690 267	31		
359 096	38	444 099	4	477 165	19	690 274	31		
359 102	37	444 105	4	477 356	8	690 281	31		
359 126	38	444 112	6	479 855	25	690 298	31		
359 133	37	444 129	6	479 879	25	690 304	31		
360 399	40	444 150	22	479 886	25	690 311	31		
360 405	39	444 167	22	479 893	25	692 629	22		
361 204	10	444 174	22	479 954	26	692 797	28		
361 211	10	444 556	27	479 978	26	713 416	17		
361 228	10	446 611	16	480 011	26	736 255	14		
364 045	39	446 628	40	489 298	30	736 279	14		
364 052	39	446 635	40	493 325	36	736 293	14		
364 298	36	449 292	40	493 332	36	736 309	14		
365 073	7	457 198	32	493 349	36	736 316	14		
365 080	8	457 211	32	493 356	36	736 323	14		
365 097	13	457 235	32	534 042	25	746 377	33		
365 103	21	457 242	32	534 059	25	746 384	33		
365 110	21	457 259	32	534 066	25	746 391	33		
365 127	22	461 256	17	534 073	11	746 407	33		
365 134	22	461 263	17	534 080	11	746 414	33		
365 882	8	461 270	17	534 097	11	746 421	33		
366 056	40	461 287	17	534 103	11	746 438	33		
366 476	19	461 294	17	534 110	11	746 681	34		
366 865	19	461 300	17	534 127	11	746 698	34		
367 015	22	461 317	17	534 134	12	746 704	34		
374 570	30	469 450	23	534 141	12	746 711	34		
379 698	39	469 467	23	534 158	12	746 728	34		
380 878	22	469 474	23	534 165	23	746 735	34		
380 885	22	469 481	23	534 172	23	746 742	34		
397 166	36	469 498	23	534 189	23	746 759	34		
424 435	37	469 504	23	577 582	17	746 766	34		
424 473	37	469 511	23	577 605	19	746 773	34		
424 497	37	469 528	23	577 612	19	746 780	34		
424 534	22	469 535	23	577 650	17	746 797	34		
426 743	22	469 542	23	577 667	13	746 803	34		
426 750	22	471 026	32	577 674	12	746 810	34		
428 174	13	471 033	32	577 681	4	747 312	35		



model	strana	model	strana	model	strana	model	strana	model	strana
1022.5	39	2259.5XL	26						
1022.6	39	2260	21						
1075.12P	14	2262	21						
1075.96	39	2263	22						
1096.0	38	2263XL	22						
1096.5	37	2264	23						
1096.8	38	2265	21						
1096.9	38	2267	23						
1097.0	38	2269	24						
1097.5	37	2270.10	33						
1097.6	39	2271.1	40						
1097.7	39	2272.1	40						
1097.9	39	2272.2	40						
1526.414-897	31	2272.5	40						
2021.7	28	2273.1	40						
2141.3	28	2275	33						
2141.4	28	2275.10	34						
2211	12	2275.3	34						
2211.1	14	2275.4	34						
2211XL	12	2276.8	31						
2212	13	2278	35						
2212.1	15	2278.5	35						
2212.3	13	2411XL	12						
2212.4	13	2412XL	13						
2213	14	2415	17						
2214	15	2415.1	19						
2214.1	15	2415.1XL	19						
2214.2	16	2415.2	20						
2214.3	16	2415.3	17						
2215.1	19	2415.5XL	17						
2215.1XL	19	2415XL	17						
2215.4	18	2416	4						
2215.5	18	2416.1	4						
2215.5XL	18	2416.1XL	5						
2215.6	14	2416.2	20						
2215XL	17	2416XL	4						
2216.1XL	5	2417.2XL	11						
2216XL	4	2418	7						
2217.1	10	2418	8						
2217.2	10	2418.1	8						
2217.2XL	11	2418XL	9						
2217.3	28	2426	5						
2218.4	30	2426.1	6						
2218XL	9	2426.1XL	6						
2221	29	2426.2	20						
2221.1	29	2426XL	5						
2222	29	2427	7						
2222.05	30	2428	7						
2222.2	30	2456	23						
2222.6EX	29	2456XL	23						
2225	27	2457	24						
2225.5	27	2459.5XL	25						
2225.6	27	4213.2	14						
2226.1XL	6	94385.1	38						
2226XL	6	94477.0-713	30						
2228.7	28	9777.9	18						
2232.1	31	9778.0	20						
2232.3	31	9778.1	20						
2235	35								
2235.2	36								
2237.5	32								
2238	32								
2238.5	33								
2239	32								
2244	37								
2247	37								
2248	37								
2249.3	36								
2251	31								
2252	36								
2255	22								
2256XL	24								
2259.2XL	26								
2259.5	25								